

YOUR COMPLETE NEWCOMER / VISITOR SOURCE

the original™

RELOCATION

guide

FREE



Life in

THE UPSTATE
of South Carolina

Inside:

**AREA
MAP!**

- EDUCATION
- HEALTH & WELLNESS
- UPSTATE LIVING
- UPSTATE REAL ESTATE
- AND MORE

www.relocationguide.biz

SERVING GREENVILLE, SPARTANBURG, GREER, ANDERSON, EASLEY,
SIMPSONVILLE, SURROUNDING TOWNS AND COMMUNITIES.



A DAMS HOMES

20 YEARS

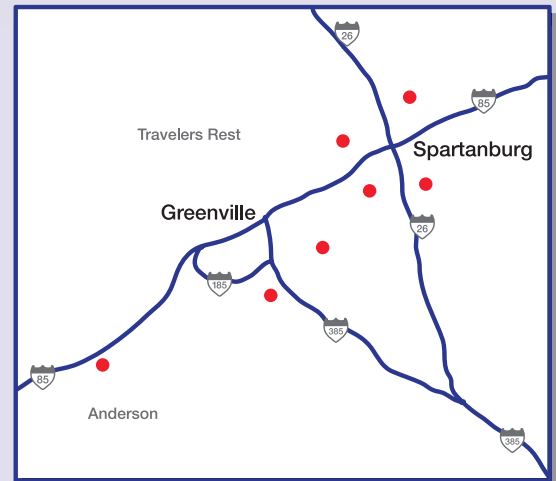
Built with brick. Built to last.

All brick homes from the \$120's

Exceptional quality, unbeatable value and the superiority of all brick construction sets Adams Homes apart from the others. Our all brick homes are an affordable luxury that you too can enjoy. Dynamic, open-floor designs include everything discerning homeowners want and need in a home. Visit our Upstate neighborhoods to see the difference.



- Superior protection
- Energy efficient, green product
- Minimal upkeep



7 Communities in Upstate South Carolina

Visit our website AdamsHomes.com to view available homes ready for immediate move-in.

Call 864.458.7044 or visit us at AdamsHomes.com

BRAND NEW HOMES

in a Spectacular Mountain Golf Setting

Family favorite!



Our most popular 2 story plan. Large rooms and an open, flowing floorplan make this a favorite with families. Porches on the back side of each level offer gorgeous views of the surrounding community.

The best new home value in the Blue Ridge Mountains!

Expansive main level living along with master retreat and open gourmet kitchen. Quality construction with many high end finishes.

Come see all we have to offer - with one of our Discovery Packages!

Move in today!



- Gorgeous golf course setting with magnificent views
- 4000 sf Wellness Center with tennis courts & swimming pools
- Public water & sewer, underground utilities • Easy access to cultural and educational opportunities • Just 25 minutes to downtown Greenville



Models open daily for touring - call now:

1-866-334-3253 • www.CherokeeValleySC.com



“Our experience with Meritus was excellent. They are professional in every aspect of their business, communicate well and pay attention to every detail. We would highly recommend them to anyone.”

Jim and Ruth Bolding
The Cliffs / Keowee Falls South
Salem, South Carolina

We Build Dreams.

There are dozens of reasons to build a new house. Whether it's the need for more space, the desire to downsize or maybe a relocation, your new home should be a reflection of your personal style and vision. At Meritus, we take the time to understand what's important to you, and we work to build your dream.

MERITUS[™]
Signature Homes

Experience our Design Center at:
2508 N Main Street | Anderson, SC 29621
864-261-7699 | www.meritushomes.com



Southern Living
custom builder program



Welcome to *The Upstate*

The natural beauty, quality schools, strong values, and friendly wholesome environment here make for the perfect place for families, retirees, and those who are simply looking for a fresh start. It is exciting to see the changes in the Upstate area over the years, with the resurgence of main streets returned to glory with music, restaurants, nightlife, and thriving retail and corporate businesses. Now, there are dozens of entertainment venues for sports and the performing arts with music, ballet, and theatre.

Located in the foothills of the Blue Ridge Mountains and with easy access to I-85 and I-26, the Upstate is also within easy driving distance of Asheville, Charlotte, Atlanta, and Charleston for weekend get-a-ways to the ocean, mountains, and lakes. This 10-county, commerce-rich corridor is also the fastest growing region in the state.

Large international corporations have established regional, national and continental headquarters here bringing a strong economy, growth, and future development. This has also helped to foster cultural diversity and understanding in our communities, enhancing our lives forever!

The team at The Original Relocation Guide - Upstate edition knows how important pertinent information on an area can be to relocating families. This magazine's detailed map and informative articles are sure to enhance your moving experience. The Relocation Guide Blue Pages, located in the back, provide important phone numbers and contact information that you will need to get settled into your new home, whether you are new to the area, visiting or just making a cross-town move.

I know you will find our magazine to be a helpful guide whether you are a visitor or if you are relocating here. Be sure to tell our advertisers where you found them and thank them for making it possible to bring you this publication. You can also follow us on Facebook where you can keep up with news and events in the Upstate area.

Wishing you all the best from the Upstate!

Angela Mathis
Associate Publisher



EXECUTIVE PUBLISHERS

Mark Boyd, Don Holland

ASSOCIATE PUBLISHER

Angela Mathis

ACCOUNT ADMINISTRATOR

Kathy Odrezin

MANAGING EDITOR

Brett Cornwright

CREATIVE DIRECTOR

Marty Tatum

CONTRIBUTING WRITERS

Barbara Brady, Lynne Brandon,
David M. Collins, Jr., Brett Cornwright,
Laurel Hyatt, Georgie Rhein,
Margaret Roth DMD, Serena Stevens

CONTRIBUTING PHOTOGRAPHERS

City of Easley, City of Greenville,
Greater Greenville Chamber of Commerce,
Whitney Ellis

MARKETING REPRESENTATIVES

Antonio Atoigue, Ericka Hampton,
Lisa Giovanni, Penny Luther,
Jennifer Matteo, Lisa McCall,
Christy Robertson, Judy Rochman,
Kelly Werner

MARKETING INTERN

Ryan Huffman

VISIT OUR ADVERTISERS

Link to our advertisers' websites by visiting
www.RelocationGuide.biz

Progress Printing Company

Calvin Hicks, chicks@proprint.com

For Advertising and Distribution Information

Call 1-877-RELOMAG (735-6624)

or 919-518-0755



Copyright 2013 by DonMark Custom Publishing Inc. All rights reserved. No part of this magazine may be reproduced or transmitted in any form without written permission from DonMark Custom Publishing Inc. Every effort has been made to verify contents and information contained herein, however, DonMark Custom Publishing Inc. assumes no liability for accuracy or omissions. All real estate advertising in this publication is subject to the Fair Housing Act of 1968.

2435 Lynn Road Suite 106

Raleigh NC, 27612

Phone 919-518-0755, Fax 919-518-0766

www.relocationguide.biz

All About Flooring

Don't worry,
IT'S SMARTSTRAND.

Only SmartStrand® can handle the 747 lbs of ice cream a family will eat in a carpet's lifetime.



SmartStrand's stain resistance is built right into the fibers. So it never wears or washes out, even after multiple cleanings. Visit our showroom and one of our staff members with over 30+ years of experience will be happy to assist you in making the right choice when it comes to flooring. – **It's worth talking with the experts.**

Call 864.241.3636 or
visit allaboutflooringofsc.com

2333 N. Pleasantburg Dr. #A · Greenville, SC 29609

MOHAWK
SmartStrand
with DuPont™ Sorona® renewably sourced* polymer



• Cover photographs are often stock images selected for their similarity to a region. Stock photographs may or may not be of actual locations in the region. This issue's cover shows beautiful downtown Greenville.

in this ISSUE

- 8 Upstate Living
- 12 Greenville Living
- 13 Area Map
- 16 Spartanburg Living
- 18 Easley Living
- 19 Greer Living
- 20 Anderson Living
- 22 Simpsonville Living
- 24 Upstate Real Estate
- 26 Buying or Building a Home
- 28 Handling Legal Matters
- 30 Education
- 31 Moving 101
- 36 Health & Wellness
- 42 Dental Services
- 44 Worship
- 46 Blue Pages
- 47 Advertisers Index




The Journal
2012
Best of the Best
Reader's Choice Awards 



Call 864-276-7157
for your free estimate!

BRADLEY CONSTRUCTION LLC

When *Quality*
is
Non-Negotiable!

112 Clair Drive, Piedmont SC 29673

Additions · Bathrooms · Decks
Gutters · Kitchens · Masonry
Painting
Patios · Pressure Washing
Roofing · Siding · Sunrooms
Windows

www.BradleyConstructionSC.com





WELCOME TO SOUTH CAROLINA



ONE OF THE TOP FIVE LARGEST BUILDERS IN THE UPSTATE

Serving the Upstate for over 20 years, McAlister Realty and SK Builders are committed to providing quality homes at affordable prices. We have 19 communities across the Upstate—making it easy to find the location and amenities that suit you. Or, if you've found that perfect piece of property, then let us come to you and build on your own land! Call one of our expert representatives today. We'll be glad to welcome you home.



(894) 292-0400

www.BuilderPeople.com

(800) 944-2922

Put Down Roots

IN UPSTATE SOUTH CAROLINA

BY GEORGIE RHEIN



If you chat with folks in the Upstate you will discover a blend of backgrounds – those who were born and raised in one of the local small towns, a retiree who came because the cost of living fit their budget or the young professionals looking for opportunity or a safe place to raise a family.

The Upstate provides all that: safety, growth and controlled cost of living amid a temperate climate. This is the place where words like meandering, twilight and sweet iced tea give meaning to a culture and a history that describes many of the small towns like Woodruff, Duncan and Chesnee. The South may have changed but the values and customs are still as down home as sitting on the front porch at twilight watching lighting bugs above the lawn.

While at one of the South Carolina Welcome Centers, a Florida resident summed up her visits to her fiancé in the Upstate area: “It’s been a pleasure spending time here with his family, and although business has brought us back to Florida, we take every opportunity to return and enjoy the kind, wholesome and beautiful South Carolina Upstate. Time and time again, I’m blown away by the incredibly perfect balance between modernity and tradition, city and country, and peacefulness and excitement. We look forward to owning our own home in the Upstate one day.”

Upstate South Carolina is growing slow and steady like the flow of the Reedy River, and all in the backdrop of the Blue Ridge Mountains that peek through the clouds in Asheville, N.C., just one hour away. Redevelopment initiatives and proper planning shape the hometowns and city growth in the region so the Upstate has become known as “the jewel of the South.”

Taking more than 40 years to transform itself from an agricultural and textile region, the Upstate today shows skyscrapers casting shadows on the rivers that flow nearby. The mill towns are gone and only a few of the row houses remain. Instead, new subdivisions spread out in suburbia surrounded by parks and baseball or soccer fields. Greer, once a sleepy railroad town is now home to the Upstate’s largest corporate employer, BMW, which provides more than 5,000 jobs to the region.

According to home builder Rick Quinn of Quinn Satterfield Homes, “The combination of low property taxes, business friendly policies, affordable housing, our location at the foothills of the mountains, along with a large, growing and diverse employment base makes us an increasingly desirable place to live. On top of that, our conservative nature prevented us from seeing house prices go way up or come way down.”

Greenville is the economic hub of the Upstate since it holds the largest concentration of business and financial institutions. More than 180 corporations have chosen Greenville for their headquarters.

Southwest Airlines opening services at the Greenville-Spartanburg International Airport is symbolic of a region on the move. Several new industries such as alternative energy, fiber development and professional call center management have created new jobs in the past two years. The Miliken Institute just named Greenville as one of its Top 200 Workable Cities in America, a rise to 51st on the list, which is up from 112 in last year’s rankings.

As a result of the expansion in Upstate, new business groups have evolved. The Upstate S.C. Alliance is a non-profit organization charged with marketing and branding Upstate South Carolina to the world to attract new jobs >>

Get Into Gaffney

South Carolina

For a Day, a Weekend or a Lifetime . . .

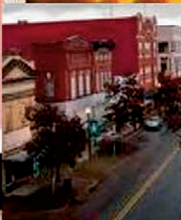


. . . and Get into Shopping, the Arts, History and Excellent Quality of Life for all seasons

www.getintogaffney.com



Downtown Shopping



Over 70 Outlets



Arts



History

Where the past is honored, the present is engaging, and the future is inviting.



Located off I-85 at the entrance to the Cherokee Foothills Scenic Highway, approximately one hour from Charlotte, NC & Greenville, SC, and only minutes from the Blue Ridge Mountains.

GAFFNEY VISITORS CENTER & ART GALLERY

(864) 487-6244



and stimulate capital investment.

According to Richard Blackwell, the Alliance Vice President, “The Alliance has helped 44 companies expand or relocate to this market.”

Just this year, Carbures plans to hire up to 100 more employees as it invests \$400 million in building a second facility in Greenville. Carbures entered the U.S. market in 2011 with the establishment of its first U.S. facility and headquarters at the S.C. Technology and Aviation Center in Greenville County.

Cadiz, a Spain-based manufacturer, produces carbon and composite structures for the automotive, aerospace and infrastructure markets. Growth has continued as these markets push for more lightweight, durable and sustainable parts.

Another technology company, SMF, announced expansion in April. With the help of the Alliance, they are building a new facility in Anderson County which will create new jobs.

“It’s exciting to see more companies like SMF decide to put roots down in South Carolina,” said Governor Nikki Haley. “We understand what businesses need in order to do well, and more companies are choosing to bring capital investments to the Palmetto State. We celebrate SMF’s decision to invest \$5.8 million and bring 146 new jobs to Anderson County.”

The Greenville Chamber of Commerce, the City of Greenville, and Hughes Development Corporation created the NEXT Innovation Center along with the NEXT founding partners. The entire project has been a collaboration of entrepreneurs, architects, engineers, government and non-government organizations. A center with space now exists for professionals who come with a dream and solid idea. Resources are available to help them develop it into an entrepreneurial success.

The Upstate has quickly become a melting pot of sorts for this new hi-tech economy. The backbone of this growth is design and engineering talent. With its international influences, and a determined workforce, the Upstate is attracting engineers, chemists and researchers to develop entrepreneurial business ideas with the support of NEXT.

Bruce Yandle, former Executive Director of the Federal Trade Commission under President Reagan, sees these signs of economic recovery and development when he looks out from his front porch. Yandle lives near the train depot in Clemson and is a train buff himself.

“I can count the cars on the freight trains, and I can tell if the trains are getting shorter or longer,” Yandle said. “They’re getting longer these days.” He knows that prosperity is in every container that goes by carrying goods to someone who will buy them. Yandle is especially optimistic about the Upstate’s current economic future. He says that Pickens County and the surrounding area are one of many “pockets of prosperity” that haven’t been hit as hard during the recession. The unemployment is trending at 6.6 compared to the nation’s 7.5.

“The trending areas are the Greenville-Easley-Mauldin Metropolitan areas,” Yandle said. “The Upstate is a great place to be economically for the next two years.” Upstate realtors agree with Yandle that the industry begun in Greenville is now expanding into nearby cities of Easley and Mauldin so new homes starts are also up in the northern end of the county near the mountains around Travelers Rest and south of Greenville towards Columbia.

Not only has the Upstate developed commercially, it has become one of the top 10 areas for relocation because of the quality of life and range of housing. The cost of living is 10 percent below the national average while cultural and recreation opportunities flourish with the region’s history and diverse geography.

From the foothills of the Blue Ridge Mountains to the whitewater rafting on the Chattooga River, the Upstate is blessed with natural beauty and abundant water resources. Mild winters and sunny summers, along with spring and fall seasons, make it an appealing place to call home.

Families who enjoy culture and history will find lots to do in this area. South Carolina’s National Heritage Corridor begins at the baseline of Blue Ridge Mountains in Upstate’s Oconee County and stretches to the port city of Charleston. Telling the state’s colorful story of evolution and culture, the corridor has 500 historic sites from upcountry mill villages, waterfalls and historic towns to gardens and farms.

The Upstate region has something for everyone. Whether you want whitewater rafting or canoeing, there are numerous lakes and rivers for your enjoyment. Hiking or biking opportunities abound with scenic mountain trails and winding country roads. Mountain biking is now a leading sport in Greenville County. Did you know there are more than 25 waterfalls in the upcountry? Some require hiking to enjoy the views such as Big Bend Falls off the Chattooga River. With a 30-foot vertical drop, the roar of the water can be heard long before you feel the spray.

South Carolina State Parks manage over 47 parks across the states. Those in the upcountry provide access to creeks, rivers, ponds, or lakes with a variety of fish for the sports fisherman. A couple of good fishing places are Caesars Head State Park in Cleveland for trout and the Devils Fork State Park in Salem.

Bass tournaments are held annually at Lake Russell in Greenwood and Lake Hartwell near Anderson. The whole family can enjoy time on the water since sailing and jet skiing are also allowed.

Ladies will want to bring an extra suitcase for all of the shopping that can be done at outlet stores, malls and boutiques. One of the largest is the Gaffney Premium Outlets featuring a collection of 75 leading designer and brand-name outlets including Ann Taylor, Banana Republic, Coach, New York & Co., Nine West, Nike, Polo Ralph Lauren, Pottery Barn and Tommy Hilfger.

The South Carolina Botanical Gardens in Clemson are a must see for gardeners, especially in the spring when the camellias are in full bloom.

UPSTATE LIVING

Golfers would be hard-pressed to find better courses in more gorgeous surroundings than those found in the northwestern part of the state. Greenville's golf courses and the nearly 80 public courses and resort golf courses in this region offer challenging play in beautiful surroundings. A foursome can tee off at The Preserve or Stoney Point for a championship golf experience.

Visitors to the Upstate will have no problem filling their days and evenings with every kind of leisure activity. Several towns have created dining and entertainment options from fish camps to bluegrass jam sessions.

The region is home to over seven public and private colleges so locals benefit from the athletic programs, music and arts generated by the campuses.

Come join us here – life in the Upcountry is good! []



Talk to us about a
401(k) rollover.

Steve Borklund Ins Agy Inc
Steve Borklund, Agent
6719 State Park Road
Travelers Rest, SC 29690
Bus: 864-834-9096

If you're about to retire or change jobs, you may have some decisions to make about your retirement plan money. Good thing there's someone who knows you and is ready to help.

Like a good neighbor, State Farm is there.®

CALL ME TODAY.



1001389.1

State Farm Mutual Automobile Insurance Company,
Bloomington, IL

For Every Occasion- For Every Season



Offering a complete selection of:

- Engagement Rings
- Southern Gates merchandise
- Diamond Rings
- Citizen & Seiko watches
- Wedding Bands
- Diamond Earrings & Pendants

We specialize in remounting of old jewelry.
All work is done on site in our complete repair shop.

Quality
merchandise
at affordable
prices.



TATE JEWELERS

Manufacturing Goldsmiths

242 West Wade Hampton Blvd.
Village Square - Greer, SC 29650

864-879-4012

YOUR TRUSTED LOCAL MANUFACTURING JEWELER SINCE 1975.

Experience Greenville, CROWN JEWEL OF THE UPSTATE BY BRETT CORNWRIGHT



Set among the foothills of the Blue Ridge Mountains in the northwest corner of South Carolina, Greenville is conveniently located between Atlanta and Charlotte along Interstate 85.

As the largest city in the Upstate, it is the commercial hub for the region. The newly re-named TD Convention Center attracts major corporations for conferences, seminars and regional conventions. Business is thriving as the Greenville Convention and Visitors Bureau (CVB) works to attract new companies. With the Reedy River flowing through the heart of town, the city has a rich heritage of parks, plazas and bike trails for families relocating to the Upstate.

Known as an economic development organization, the CVB is responsible for promoting the greater Greenville area as an attractive destination for meetings, tradeshow, sporting events and professionals relocating. Primarily marketing and promoting the city and county of Greenville, the CVB's goal is to increase visitor-generated revenue from local, regional and national markets, strengthening Greenville's economy. As a result, residents enjoy an affordable cost of living without sacrificing convenience or location.

Greenville's unique blend of affordability, culture and business amenities make it a great location for U.S. firms, especially those focusing on engineering.

Contributing to the business technology, the Greenville-Spartanburg International Airport provides easy access for global companies.

With significant educational resources, a hi-tech research and development center and a deep labor pool, it's no surprise some of the top engineering companies in the world call Greenville home.

After 40 years of re-development, Greenville has left behind its beginnings in the textile industry and is now a center for technology and medicine. Gone are the mill towns that grew along the banks of the rivers. The Greenville skyline has spread.

But, city planners are committed to growing at a controlled pace. Greenville is often referred to as the "state-of-the-art" city because of its focus on preserving parks, supporting green technologies and balancing the business/manufacturing segments for the best quality of life.

Solar power, a green roof and a virtual media room, are demonstrated in Greenville's Reedy Square, which will be a new destination for visitors and residents next year. As a modern version of the town square the complex will be a central station with concierge travel services, media room, café, art gallery and an interactive map of the Upstate. The city's goal is to connect people with the experiences that define the Upstate – art, culture, history and commerce.

One of city's recent technology decisions has been Greenlink, a bus transportation system that serves the city and much of Greenville County. City leaders are in the early planning stages for a comprehensive transit system that will help manage increasing traffic volume on interstates and roadways. Considerations are under way to expand the current Greenlink bus routes, create a tram-trail running from Travelers Rest to Downtown Greenville, and discussions have begun for a future potential commuter rail and light rail transit system that will connect suburban commuter stations with urban destinations, office parks, and retail centers.

In the spirit of new technology, the Spring & Green Fair at the West Greenville Community Center comes to town this year to teach companies and families about energy conservation. Through its Livability Studio, the Center educates the community on sustainability to create a greater awareness of urban planning. As part of Connections for Sustainability's outreach efforts, the spring fair will feature information and demonstrations on a variety of topics including rain barrels, home energy efficiency, community gardens, healthy eating and active living. >>

AREA MAP



When asked about Greenville business development, Hank Hyatt of the Chamber of Commerce shared: “While Greenville is fortunate to have a strong base of existing manufacturers and larger corporate facilities, we are now seeing the development of a vibrant entrepreneurial ecosystem. We want to support entrepreneurs in bringing new jobs to the city as they expand.”

To support the leading manufacturers in Upstate region, Hyatt helped create the Greenville Chamber’s Manufacturers Roundtable. As a Chamber sub-group, the forum supports competitive, world-class manufacturing by providing resources for plant managers from across various industry sectors to address issues impacting their operational competitiveness.

Hyatt explained: “The Roundtable allows plant managers to discuss challenges with government regulations, vendor sourcing and HR issues. We learn from each other so every member benefits in solving problems.”

Another source for business development is the Greenville Area Development Corp., an economic development group created by Greenville County Council. In its April annual report, the group confirmed recruiting \$273 million in capital investment in 2012 along with the creation of 1,454 jobs.

Favorable corporate tax rates in South Carolina contribute to Greenville’s expanding business

diversity. Major industries range from automotive to advanced materials, healthcare, professional research and pharmaceuticals. Research firms, including R&D facilities for Michelin, Fuji and General Electric, partner with Clemson and USC, the Upstate’s leading universities. Several companies have combined resources with Clemson to create ICAR, a 250-acre research park in Greenville that specializes in innovative automotive design technologies.

As international business grows in Greenville County, many of the companies relocate their employees to live and work here. In 1998, a group of individuals realized there were no services for international newcomers needing help settling into the area. The City of Greenville, the Greater Greenville Chamber of Commerce and Michelin North America worked together to create the International Center of the Upstate, an organization of local business and community leaders that meet the needs of new international residents. Greenville families have benefited as well from a chance to meet people of other cultures. Today, ICU is the Upstate leader in innovative international programs and events, and serves as an important community resource.

Just as locals work hard in this expanding region, they also enjoy experiencing Greenville’s nightlife that is expanding into the West End District. When the sun goes down, locals sample some of the finest culinary creations at local eateries ranging from outdoor cafes, a

variety of park settings or the warm hospitality in Southern cooking. Greenville restaurants offer cuisine with international flavors of Italian, French, Thai, Greek, and Mexican. And those who enjoy music will want to try Main Street Fridays at the Hyatt Plaza. The concert series features regional and national performers every Friday afternoon from mid-March to September. Friends also gather at the local brewery, coffee shop or bookstore.

With great venues like the Peace Center for Performing Arts as well as quaint community theaters, you’re sure to find festivals and events to suit your interest. Throughout the year, the Upstate welcomes nationally known artists to take the stage; however, Greenville also takes great pride in showcasing local musicians.

There is fun for every age group with the Falls Park events, the Greenville Zoo and the new BI-LO Center arena. Within walking distance of Main Street is Heritage Green, home of cultural attractions including the Greenville County Museum of Art.

THE GREATER
Mauldin
Chamber of Commerce

Let Us Work For You in 2013 to Make Your Business a Success!
864.297.1323 | www.mauldinchamber.org | 101 East Butler Rd. Mauldin, SC 29662

GREENVILLE LIVING

When it comes to the fine arts, Greenville has lots to offer. You may see an outdoor play by a summer theater group or find a musician plying his craft by the cool waters of the cascading waterfall. *Southern Living Magazine* recently named Greenville its “City of the Arts” due to the number of theatrical, music and arts performances available any night of the week. Whether your preference is opera, a symphony, or dancing to a down-home country band, the arts are thriving throughout the Upstate.

Greenville County exemplifies life in the great outdoors with 39 parks. Greenville Parks and Recreation offers a comprehensive system of greenways, public facilities and recreational choices that help enhance the quality of life of its residents and visitors.

Families who enjoy camping can plan weekends at Paris Mountain State Park inside the Greenville city limits. It dates back to the Great Depression when built by the Civilian Conservation Corps.

Newcomers to the area frequently ask about the quality of education for their children. Whether the preference is private or public education, the Greenville School District is rated one of the best in the state.

The quality of life for this Upstate region must also include spirituality and good health for the family. Perhaps one of the most charming aspects of Greenville is its progressive attitude. From a wide selection of churches to five major hospital systems in the region, Greenville provides services for young families and a growing retirement population.

Greenville’s mild winters and sunny, humid summers, along with spring and fall seasons, make it a city with changing character. It is especially charming in the fall with the trees vivid red and yellow colors.

Whether your goal is relocation, starting a new business or planning a family vacation, Greenville’s resources can accommodate you. []



Imagine It! Discover It! Live It!



Rolling Green
VILLAGE

Contact Us Today!

864.987.4612

1 Hoke Smith Blvd
Greenville, SC 29615

Managed by Life Care Services™



Rolling Green Village offers:

- Independent Living Patio Homes
- Independent Apartment Homes
- Assisted Living
- Memory Care
- Rehabilitation
- Skilled Nursing

Veterinary Care with a Difference

Dr. Margaret Roberts
Dr. Robyn Gallucci
Dr. Beth Romig
Dr. Aaron Pate



Doctors hours by appointment. Come and visit us for your free gift!



429 The Parkway, Greer, SC 29650 | 864-877-7387 | www.milestonevet.com



Family Friendly Living IN SPARTANBURG

BY LAUREL HYATT



Located 98 miles northwest of Columbia, 80 miles west of Charlotte, and about 190 miles northeast of Atlanta, Spartanburg, South Carolina, is at the “sweet spot” for easy access by both travelers and industry. Spartanburg is the largest city in and the county seat of Spartanburg County.

Numerous companies have decided to headquarter within Spartanburg including Advance America, Denny’s, Extended Stay Hotels, RJ Rockers and QS/1 Data Systems. Spartanburg is also the home to the research facility and world headquarters for Milliken & Company. Spartanburg County is home to over 80 international firms representing 18 countries including BMW, Adidas, Dräxlmaier, Michelin, Röchling, Magna, Frigoglass, and Indorama. The New York Times reported Spartanburg as having the highest per capita international investment in the nation.

But Spartanburg is not resting on its laurels. The Economic Futures Group (the economic development organization for Spartanburg County) and its target industries of automotive, advanced materials, biosciences, energy, and logistics are reflective of existing industries as well as sectors expected to perform well economically in the area in the future.

Historically, for centuries the Catawba and Cherokee tribes occupied land east and west of what is modern-day Spartanburg. Early European settlers to this area included the French, English, and Scots-Irish. Spartanburg was established in the 1780s as a courthouse village and is thought to have been named

after the Spartan regiment of the South Carolina Militia. The actual city of Spartanburg was incorporated in 1831 at the time of the 50th anniversary of the Battle of Cowpens, a pivotal battle of the American Revolution that took place nearby.

If there should be a history buff in your family one of the more interesting sights includes the Price House, an 18th-century home maintained by the Historical Association. Seay House, another 18th-century home, is representative of the typical pioneer home. Its single stone fireplace and simple construction were common traits associated with southern farmsteads from this region and time period. Finally, Walnut Grove Plantation, also an 18th-century farmhouse, is the site of a locally famous skirmish during the American Revolutionary War. The plantation lies south of Spartanburg near the town of Roebuck.

Downtown Spartanburg also reflects the architecture of the past. Morgan Square, the city’s primary downtown hub, is the original courthouse village. It was founded adjacent to a small spring that forms the border of the Tyger and Pacolet River watersheds. The square’s name is derived from Daniel Morgan, the general who commanded the American forces at the aforementioned Battle of Cowpens. Now a thriving center for daytime commerce as well as nightlife, some of the oldest existing buildings on the square date to the 1880s.

One of those older buildings in the downtown area is the Magnolia Street Train Depot. It stands as a reminder of Spartanburg’s old nickname “the Hub City,” referring to the many transportation routes that connected Spartanburg with cities throughout the region. It is now the home of the Amtrak station, the Hub City Railroad Museum, and the Hub City Farmers’ Market.

Spartanburg, like its Upstate neighbors, is so much more than just rich historical heritage and restored buildings. The city is conveniently situated at the junction of Interstate 26 and I-85, making it easily accessible to both mountain and beach resorts and play activities.

Spartanburg was the first city in the state of South Carolina to receive the designation as a Bicycle-Friendly Community by the Washington-based League of American Bicyclists. The city has opened multiple bike trails and installed many bike racks. Only a handful of cities across the country have achieved this designation.

This state-of-the-art city housed in deep Southern charm features a mild climate with four distinct seasons making year-round outdoor activities easy to find and always enjoyable.

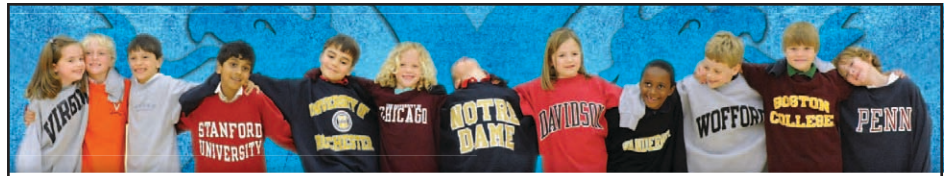
SPARTANBURG LIVING

Award-winning public schools, nationally ranked private and preparatory academies, and exceptional higher education helps Spartanburg County offer a wealth of educational opportunities from preschool to graduate school. Rated by Relocate America as one of the “Top 25 Places to Live and Go to School”, Spartanburg prides itself in the quality of education available for students who’ll later be able to attend top colleges and universities without ever leaving the area. Post-Secondary institutions such as Converse, Limestone or Wofford College are nationally recognized. The University of South Carolina Upstate is also located in Spartanburg as well as several quality private schools.

Music on Main is Downtown Spartanburg’s favorite after-work social gathering — a destination point where you can meet your friends and colleagues, hear great live music, enjoy food and beverages in an outdoor setting. The weekly concert is held each Thursday evening from 5:30 pm to 8:30 pm in Downtown Spartanburg from April through August. If you’ve been a past years’ visitor this season Music On Main has a new location for its 20th season just below Morgan Square in the grassy area between the iconic Downtown Clock Tower, Broad Street, and the Herald Journal offices.

When May arrives in Spartanburg, it can only mean one thing - it’s time for Spring! Spartanburg’s Spring Fling is one of the Upstate’s largest outdoor street festivals and is always the first weekend in May. Thousands of people converge on Downtown Spartanburg for a weekend of fun during this 35-year old Spartanburg tradition.

No visit to Spartanburg would be complete without a trip to the Beacon Drive-In Restaurant, a famous Southern landmark since 1946. Known for its famous Chili Cheese-a-Plenty cheeseburger plate, the Beacon sells more iced tea than any other single restaurant in the U.S.! Come visit Spartanburg and find out what you’ve been missing. []



Where does tomorrow begin?



It begins with opportunity.



Since 1957, parents who want to make the most of their children’s education have been turning to SDS for our one-on-one relationships, our world-class programs and our dedicated and experienced teachers. With our 100% graduation rates, our students’ future is limitless. They are well prepared to succeed in an ever changing world, ready for tomorrow, today.



To learn more or schedule a personal tour, call, click or visit.

A number of grants and scholarships are available for qualified students.

1701 Skylyn Drive
Spartanburg, SC 29307

spartanburgdayschool.org
864-582-7539

facebook.com/SpartanburgDaySchool
twitter.com/spartanburgday

youtube.com/SpartanburgDaySchool
linkedin.com/company/spartanburg-day-school

Your new best friend is waiting for you!



Spartanburg Humane Society Inc.

150 Dexter Rd • 864.583.4805, ext. 101
www.SpartanburgHumane.org/AdoptMe



Find Affordable Living

IN UPSTATE'S EASLEY

BY BRETT CORNWRIGHT



Confederacy during the Civil War. Of note is the fact that Gen. Easley was an attorney for the Atlanta and Charlotte Airline Company, which owned the railroad that passed through Easley.

Robert Elliot Holcombe, who became the first mayor of Easley, financed and built the first depot in town. The railroad helped fuel the development of the textile industry in the area; cotton was king and the textile industry was the backbone of the growing economy. As the town expanded, the U.S. Army Corps of Engineers built dams, forming lakes for recreation, and constructed U.S. Highway 123. This infrastructure brought new business and shopping centers into Easley.

As far as educational opportunity in Easley, the Pickens County Schools District consistently ranks as one of the top school systems in the state when it comes to college acceptance and test scores.

The local hospital, Baptist Easley, is part of the Greenville Medical System so seniors and families feel good about the quality of medical care.

One of the big draws to the community each year is the Big League World Series. The event lasts one week, and many teams from around the globe fight for the title of World Champion. While having the home field advantage offers certain advantages, it's pure talent that has earned South Carolina's District One the coveted title for three consecutive years. For more about this huge event, check out www.bigleagueworldseries.org.

Easley residents enjoy a new, two-story modern 63,000 sq. ft. library complete with a coffee house, computers for online use, and room for future expansion.

The Foothills Playhouse located in Easley in a 240 seat presents six shows a year. The Brooks Center for the Performing Arts merges professional with educational programming and allows Clemson University students and area residents to attend first class performing art.

There are many outlets for recreation in Easley and surrounding Pickens County with magnificent lakes, the nearby Blue Ridge mountains, and temperate weather. Home to Sassafras Mountain, the state's highest point at 3,548 feet, the region also boasts lakes Hartwell, Keowee, and Jocassee, known as the crown jewels of the Upstate area.

Lake Jocassee is the deepest, with mountains that ring the northern end. Lake Keowee with 18,500 acres has a 300-mile shoreline and is popular for boating, fishing, water skiing, swimming, camping and picnicking. The largest lake, Hartwell, covers 56,000 acres with a shoreline of 962 miles. Kayaking is also popular in the area due and the world's leading kayak manufacturer, Confluence, is also located in Easley. []

The charming Upstate city of Easley is nestled among the Blue Ridge Mountains and offers an envious quality of life for new families, single professionals and retirees who appreciate a slower, more comfortable pace. Easley is only 20 minutes from Greenville and also provides easy access to Charlotte or Atlanta.

"It's just a short drive to Greenville, so if I want to go the Peace Center's Broadway Series or a (Greenville) Drive baseball game, I can," said Sheila Plemich, a new Easley resident. "That's the reason why I moved here from Pennsylvania. I researched the area and it was the most affordable area tax wise, but it's also extremely beautiful."

"The population in Easley is booming because you have residents who have stayed in Easley all of their lives, plus newcomers from other parts of the country. Easley is a great place to work. There's a great blend of people here. There are retirees who want to live in a beautiful area that has low taxes, and younger people who are here because they want to raise their children in a safe environment that has great schools."

A part of South Carolina's Pickens County, Easley's economy is fed by a strong manufacturing base and by the proximity of the Upstate's larger, international manufacturing operations.

According to the City of Easley, manufacturing is the largest segment of the local economy, with education, health and social services second. The cost of living is 7 percent below the national average and the median home price is \$120,000.

Historically, South Carolina granted a charter for the city of Easley in January of 1874. Easley's namesake was Gen. William King Easley who fought for the

Spend Some Quality Time IN GREER

BY LAUREL HYATT



From a tiny cross roads, Greer, South Carolina, has grown into a thriving Upstate city. Located in the foothills of the Blue Ridge Mountains, the City of Greer occupies the border of both Greenville and Spartanburg Counties. Greer offers many opportunities to live, work and play in one of the Southeast's fastest growing markets.

With a population of more than 245,000 within a 20-minute drive of the historic central downtown area and almost 1.5 million residents in the metropolitan area, the community offers an excellent location for businesses and citizens to enjoy a quality of life second to none.

Greer enjoys a diverse past, from its days as a hunting ground for local Cherokees, to its settlement by pioneering families in the 1700s, to the advent of the railroad in the 1800s. Having its official beginning in 1876, one of things that makes it unique is that many of the early settlers of Greer and the surrounding areas have descendants who are still living in the area and who have had important roles in its development and progress.

If you're interested in this type of historical and genealogical research, a visit to the Greer Heritage Museum is a must. The museum is located in the former Greer City Hall building (which was originally the Greer Post Office built in 1935) and offers expanded historical exhibits. The museum also offers a library, as well as a classroom/theater, for showing short documentaries of local history. Children will enjoy interactive displays scattered throughout the exhibits.

Today, Greer possesses a combination of small-town charm and big-city opportunities, attracting a wide variety of businesses and people from across the country and the world. The Greer region is home

to more than 4,000 businesses that include BMW, Mitsubishi Polyester Film, Michelin and Honeywell.

The cornerstone of this cluster of automotive suppliers is BMW. Since 1994 BMW and Upstate automotive suppliers have invested over \$3 billion and created more than 7,000 jobs in our region. The relationship between the automotive industry and the Upstate continues to grow and evolve almost daily. The BMW Zentrum is a 28,000-square-foot visitor's center that showcases the company's heritage of engineering, innovation and commitment to social responsibility.

Fascinating exhibits will take you through BMW's rich history in aircraft, motorcycles and automobiles; plus a unique look "inside" the automobile manufacturing process with a "virtual factory tour" – where visitors can watch a BMW being made from the car's perspective. In addition, the BMW Zentrum is also the starting point for tours of the state-of-the-art BMW factory. Come experience the ultimate roadside attraction!

Of course as with most towns and cities of the Upstate, Greer is much more than just a vibrant business and industrial center. The city offers beautiful scenery with vistas that include both mountains and lakes. Excellent park facilities, recreation programs, and big-city amenities combine with outdoor recreation at Lake Robinson, Lake Cunningham, and Apalache Lake making it a truly versatile destination. There are also numerous city and neighborhood parks with organized and free form activities for the young and the young at heart.

Two major festivals draw thousands to Greer each year. In May, the annual Village Hospital Greer Family Fest celebrates the 29th anniversary of the event. This two-day event features live music on the Nationwide Insurance Garfield Main Stage and the BMW Manufacturing Co. Dick Ploof Community Stage, Mitsubishi Anne Helton Creation Station, KidsZone, Food Court, and over 150 vendors throughout the festival!

And of course no trip to Greer would be complete in the fall without a trip to one of its most popular festivals, the Countybank Greer Station Oktoberfest, coming up October 6th! The festival features German bands on two stages, lots of German foods, and of course, German beer and wine! Not only is Oktoberfest centered on German themes, it also embraces local artists and celebrates their creative works. Work on display includes oil paintings, ceramics, photography, woodwork, jewelry and much more.

The Greer Cultural Arts Council keeps visual and theater arts thriving in the city, offering classes for budding and experienced artists of all ages and staging performances. Whatever the reason you choose Greer, you're making a wise choice! []

FIND GREAT LOCATION in Anderson

BY BRETT CORNWRIGHT



On the shores of beautiful Lake Hartwell lies the city of Anderson, South Carolina. Located in the northwest corner of the state at the foothills of the Blue Ridge Mountains, Anderson is unique in being just a one-hour drive from the Appalachian Mountains, and a four-hour drive from the South Carolina coast.

Anderson lies in a prime location along the Interstate 85 corridor that helps it attract business, industry, and those in search of new opportunities and a slower pace. With a large manufacturing base and a wide range of educational institutions, Anderson is a vital contributor to the economic success of the Upstate.

Anderson is the smallest of the three primary cities that make up the Upstate Region along with Greenville and Spartanburg. It is nicknamed “The Electric City” and “the Friendliest City in South Carolina.” Anderson’s spirit and quality of life has also earned it national recognition being included in the “All-America City” list.

The city, which lies in the geographical center of Anderson County, offers affordable land, a good transportation system, infrastructure and a large number of recreational amenities.

According to Barry Ray, admissions director at Anderson University, the city did experience a downturn during the economic slowdown, but he says it has begun to rebound with new investment taking place.

“There’s no question that Anderson was hit by the economic downturn, but it’s beginning to emerge from

that,” Ray said. “Restaurants are re-opening. New ones are opening just about every month, and there’s a feeling of optimism. The real estate market has come along slowly, but construction is picking up and homes are selling again.”

According to Ray, the City of Anderson has a family-friendly quality of life that makes it appealing to everyone from young adults to retirees.

“We have great schools here, great arts, all the shopping and dining that you need, but we manage to maintain a small-town atmosphere where you know your neighbors and they know you,” Ray said.

For those newcomers desiring to further their educations, there are four colleges and one technical college within a 30-mile radius of Anderson, including

“We have great schools here, great arts, all the shopping and dining that you need, and a small-town atmosphere where you know your neighbors and they know you.”

**— Barry Ray,
Anderson University**

Anderson University, Clemson, Forrest Junior College, Southern Wesleyan University and Tri-County Technical College in Pendleton. Anderson University, which was opened as Anderson

College in 1912, is a private university that offers bachelors and masters degrees in more than 50 areas of study. Affiliated with the South Carolina Baptist Convention, the growing university is home to about 2,300 students and was recently named one of “America’s 100 Best College Buys.”

For healthcare, the major provider in Anderson is AnMed Health, a health system that serves about 300,000 people, providing inpatient and outpatient procedures to a seven-county area from the Upstate region to Northeast Georgia.

When asked where he would take a newcomer for a taste of what Anderson had to offer, Ray said the downtown area would be a great introduction.

“The restaurants and businesses there show a sense of progress and energy that is really beginning to take off,” Ray said. “I would also make sure (newcomers) saw Anderson University’s campus, which is among the most beautiful in the Southeast. Then I would take them to somewhere like the Walgreen’s Distribution Center, which demonstrates the growing economy and quality of

industries that want to call Anderson home. Finally, I'd take them to the Rainey Center at Anderson University for a GAMAC performance or the President's Gala, featuring Anderson students, and top the night off with a stroll through one of AU's art galleries.

"Anderson has a unique community spirit that supports everyone's desire to express him or herself," Ray said. "There are more grassroots plays and theater events than just about anywhere I've ever been this size and having a growing private university right in the middle of town lends a youthful vibe that is most enjoyable. The emerging downtown scene is combines upscale with down home and that's a pretty potent combination."

For the best in outdoor recreation, Anderson's Lake Hartwell attracts an estimated 10 million visitors each year, offering picnic and recreation areas, boat landings, campgrounds, playgrounds, and marinas.

Sadlers Creek State Recreation Park is a sprawling recreation and wildlife observation area that offers lakeside campground, hiking, fishing, picnicking, and boat access to the lake. Sadlers Creek's recreation area sits on a peninsula that extends into Hartwell Lake.

"Just the sheer beauty of the area and the nearby lakes gives Anderson a great atmosphere," Ray said. "Add in the good schools, great churches, and community activities, and you end up with a high quality of life." []



Nationally Ranked Graduate, Undergrad and Adult Programs



ANDERSON
UNIVERSITY

...knowledge for the *Journey*

316 Boulevard • Anderson, South Carolina • 29621 • (864) • 231 • 2000 • andersonuniversity.edu



SIMPSONVILLE —

Keeping it Simple

BY LYNNE BRANDON

Bigger is not always better.

Simpsonville, a town of 20,000, revels in its “smallness” that comes with big-city amenities. Just 12 miles from Greenville, Simpsonville is a destination known for its family-friendly lifestyle and progressive culture.

Family Circle magazine touts the Southern town as “One of the 10 Best Towns for Families (2010).” *Money* magazine gives Simpsonville a high mark as “One of the 25 Most Affordable Cities” (2011). Clearly the little town, or city if you prefer, is doing something right.

City planners are dedicated to maintaining a high quality of life with continual improvements to landscapes and upgraded streetscapes. Recent renovations have attracted business owners to the downtown that currently has a 95 percent occupancy rate. It is a hub for the community made up of small businesses, boutique shops, and locally sourced restaurants.

“We have hung in there through the recession and have weathered it quite well,” said Russell B. Hawes, Simpsonville city administrator. “We have strong leadership, and have enhanced the city by investing in our parks, downtown renovation, and the amenities that enrich our citizens’ quality of life.”

A center of activity for the town is Heritage Park, strategically located downtown. The \$20 million park with 137 acres is a major revenue generator bringing in \$400,000 annually and contributing approximately \$6 million to the economy.

Heritage Park is home to the town’s signature event, “Aloft”, the Charter Amphitheater baseball and softball tournaments, and a multitude of family events and recreation. Kids enjoy replica miniature train rides in the park and all ages love the Ice Cream Station located in the old train depot.

Each Memorial Day weekend the town welcomes 125,000 visitors who come for the four-day “Aloft” event filled with music concerts, outdoor activities, amusement rides, sports. The main event is in the sky - it is the second largest hot air balloon event in the U.S. Food lovers enjoy cuisine from gourmet food trucks.

As the largest amphitheater in South Carolina, the 16,000-seat venue brings in national touring acts like the Black Keys, Bob Dylan, Darius Ruckers and other big names. Festivals, summer movie series and holiday events draw crowds throughout the year.

The town hosts 32 youth baseball and softball tournaments each year. Thousands of visiting families join in with locals to cheer on players. Major hotel chains have been built to accommodate fans.



Baseball lovers enjoy a visit to Woodside Park for a trip down memory lane. The 1920s field was a part of the Textile League formed in the South after the Civil War. Memories of “Shoeless” Joe Jackson are relived for those who love the sport and Americana.

Festivals like Sippin’ in Simpsonville, the Upstate Harvest Moon Festival and Bovinova are annual fan favorites. The Sippin’ in Simpsonville series of events was born in 2010 and features locally made wines. The popular event has expanded from wine to include craft beer in the fall.

Food is center stage at Bovinova when locals and visitors gather to eat and raise money for a good cause. The philanthropic venture in May 2013 will feature emu, whole cows, wild boar, and Cuban pig for adventuresome eaters. For the faint of heart, there is traditional Southern BBQ, hot dogs and the like. Started by businessmen with a passion for good food and a heart for helping others, Bovinova gives back to the community by supporting charities like the Special Olympics. The innovators were intrigued by a South American chef’s method for cooking an entire steer on an oversized grill, and decided to try it for themselves. Bovinova organizer Jeff Bannister is the lead proponent of the growing event now in its third year. Music is in the mix with national bands playing on two nights.

A renovated Upstate Harvest Moon Festival celebrates local produce and merchants during Labor Day weekend.

SIMPSONVILLE LIVING

With a focus on healthy living, the festival showcases local produce, dairy, and meat products with cooking demonstrations, and tasting areas. The festival is a natural fit with area “farm to table” restaurants like Stella’s Southern Bistro, Roost, and American Grocery, along with local farms and chefs.

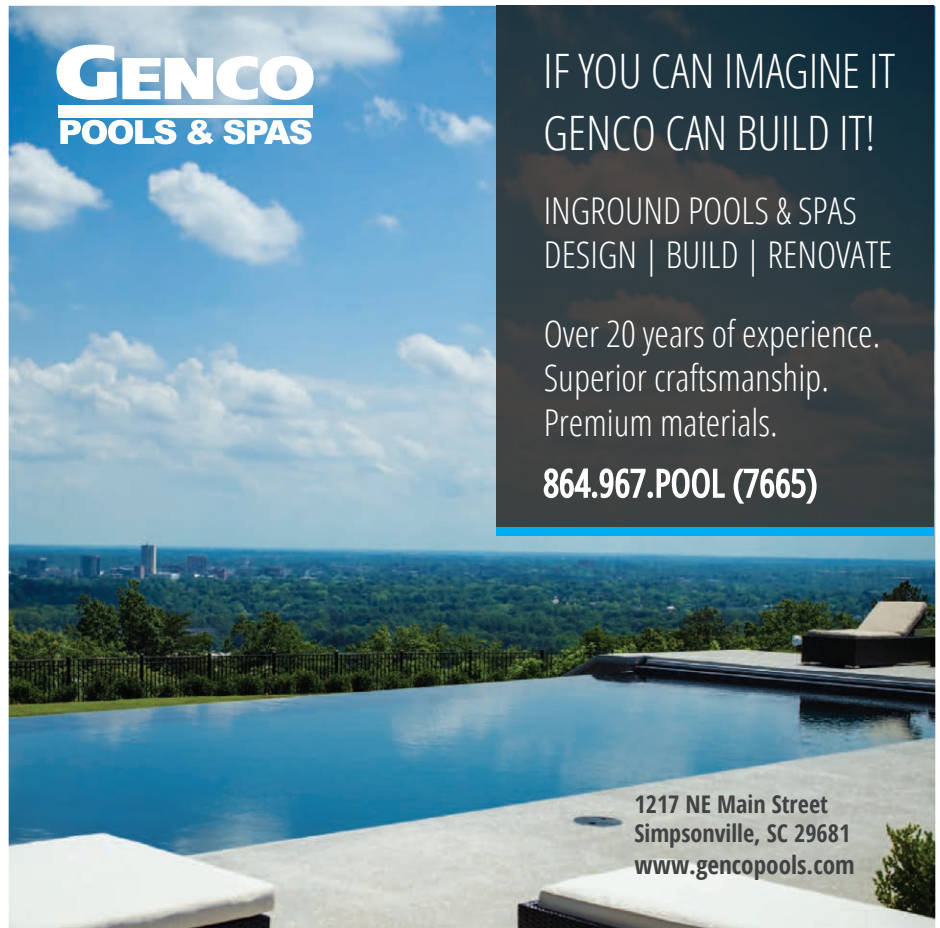
“Simpsonville is a quaint Southern town with so many unique businesses,” said business owner, Starr Hammond. Hammond’s business Southern Starr Promotions promotes locally owned businesses and educates the community on the importance of buying local.

Employment choices and quality education are important to Simpsonville residents who work throughout the Upstate region. Major local employers are Hillcrest Memorial Hospital, Greenville County Schools, Kemet, AVX, Grainger, Caterpillar and Fitesa.

Students attend Greenville County Schools or have a choice of private institutions. Higher education choices in the Upstate region include four-year and technical colleges and universities. For those who prefer to stay close to home students attend the Brashier campus of Greenville Technical College.

Residents are assured of excellent health care in Simpsonville. For more than 50 years, the Greenville Health System (GHS) has served as the premier healthcare provider with the Simpsonville Medical Campus. “The Simpsonville Medical Campus is a special resource for this community because it blends the best of a community hospital with the advantages of GHS’ academic medical expertise,” said Katie Beason, Marketing Representative.

Big city sensibility, small town charm and natural beauty combine to make Simpsonville a favorite destination for families. With its distinctive restaurants, picturesque parks, and openhearted attitude, the Simpsonville community offers a laid-back lifestyle that will suit the entire family. []



GENCO
POOLS & SPAS

IF YOU CAN IMAGINE IT
GENCO CAN BUILD IT!

INGROUND POOLS & SPAS
DESIGN | BUILD | RENOVATE

Over 20 years of experience.
Superior craftsmanship.
Premium materials.

864.967.POOL (7665)

1217 NE Main Street
Simpsonville, SC 29681
www.gencopools.com



Simpsonville Area Chamber of Commerce
Where Business Connects

Upstate **Harvest Moon Festival**

The Simpsonville Area Chamber of Commerce
proudly introduces the
UPSTATE HARVEST MOON FESTIVAL!

Join us over Labor Day Weekend for great entertainment,
wonderful food options, craft beer and wine tastings,
carnival rides, and tons of activities for children and
families!

Visit the Chamber website for more information on
Simpsonville & The Upstate Harvest Moon Festival over
Labor Day Weekend.

www.SimpsonvilleChamber.com



Housing Options IN THE UPSTATE

BY GEORGIE RHEIN



A familiar real estate trend continued early this year in the Greenville housing market. Home sales are up but homes for sale inventory maintains around 4,000 single-family dwellings that are down nearly 12 percent year-to-year.

When good quality listings are priced appropriately, the homes go under contract quickly with multiple offers in many situations. Single-family home sales year to date are up 10 percent over the same time period last year. Realtors are optimistic that 2013 will be a great year for families moving into the area since the average home price in January was \$179,061 and mortgage rates are hovering between 3.4 and 3.7 percent.

Greenville County was recently ranked 5th out of 10 affordable places to weather the economic downturn by *Forbes.com* based on affordability, property taxes, and job growth. *Fortune* magazine also recently ranked Greenville as one of the 5 Great Places to retire. Recently, Greenville's Downtown Main Street was among the top 10 Main Streets in America. According to the American Planning Association, Greenville's long-term commitment to planning and plan implementation during the past 30 years has turned Main Street into a magnet of commerce and social activity that is now expanding into neighboring areas.

Greenville is small in population but large in living since the city's lifestyle is as varied as its people. From traditional older neighborhoods to historical districts and suburban areas, the city has something for every age group. *Expansion Management* magazine confirms that Greenville was recently rated one of the best national housing markets.

The Upstate region has developed socially and economically in the past decade. It has also become a good choice for relocation because of the quality of life, range of housing and climate. The cost of living is 10 percent below the national average while cultural and recreation opportunities flourish with the region's history and diverse geography. The major Greenville suburb real estate markets include Greer, Mauldin, Simpsonville, Taylors, Travelers Rest and Fountain Inn.

The range of housing choices impresses most newcomers, especially the new urban developments like Verdae, which allows families to live and work in the downtown Greenville area. You can choose a rural setting with a home, garden and chickens or a stylish loft in downtown that puts you right in the heart of the nightlife.

The second largest real estate market in the Upstate is the nearby Spartanburg area. The recent remodeling of Morgan Square has revitalized the city's center along with a key marketing program drawing families to the park and Square. A number of historic buildings have been restored to attract new companies and now provide upper level lofts as alternatives to apartments.

Neighborhoods surrounding Spartanburg include both commercial and residential properties. From older streets built around a railroad stop to subdivisions with hundreds of new homes, families can find the exact home they want.

The national vacancy rate for owned homes at the end of 2012 had dropped to 1.9 percent from a high of 2.9. That's still above the 1.5 percent norm but nevertheless encouraging. The ever-optimistic National Association of Realtors predicts a 5 percent rise in median existing-home prices through 2013, though most forecasters see a more modest 3 percent upswing in real-estate prices. A careful homebuyer who compares neighborhoods and values can do very well in the Upstate region.

The 10 counties in the Upstate region border North Carolina, Georgia and Tennessee. With the Interstate 85 freeway connecting Atlanta, Ga., and Charlotte, N.C., this area is the fastest growing in the state. South Carolina's National Heritage Corridor begins at the baseline of Blue Ridge Mountains in Upstate's Oconee County and stretch to the port city of Charleston. The corridor has 500 historic sites from upcountry mill villages, waterfalls and historic towns to gardens and family-owned farms. Newcomers can enjoy a lifestyle that's rich in history and Southern culture. It is easy for a family to work in the city and live in the country. []



FINDING YOUR HOME in Upstate SC

BY SERENA STEVENS

For those considering a move to South Carolina’s Upstate, your timing is perfect for finding an affordable home, no matter if you are buying or building anew. Long-term interest rates are at all time lows, and there are many bargains to be found if you do your research and explore the right areas.

The Upstate’s cities — Greenville, Spartanburg, Anderson, and the surrounding communities — offer convenient neighborhoods and a plethora of housing options. The cost of living in the Upstate is lower than the national average, resulting in a “more-home-for-the-money” scenario. You are going to be thrilled with the end result financially if you are considering a move here.

Previously owned homes are typically cheaper per square foot, but costs for building materials (drywall, lumber) are also low now, so building your own custom home might also be a smart move for you depending on your preferences.

Many people enjoy the challenge and end reward in designing a custom home to suit their lifestyles and tastes. Custom builders are well represented in the Upstate and will help you design and build the home of your dreams!

The first thing to consider when buying (or building) a new home, of course, is your current financial situation. Getting your credit report up-to-date is vital. You can download a free credit report online at many web sites. Check for errors and take care of anything that is listed as outstanding.

Armed with that information, the next task is getting pre-qualified for a loan. Pre-qualifying takes things a step further than simply pre-approval for a loan. Whereas with pre-approval the lenders may only look at your basic income, with pre-qualifying they will probably want information on your income, assets and credit status.

Lenders will use this information to determine a loan amount that would be approved. Pre-qualification will give you a more accurate price from which to work, as well as the assurance that once you select your house, the money will be waiting for you.

Contacting a real estate agent is next on the list. A good agent can help you nail down the type of home you’re looking for: the location, the neighborhoods, schools, etc. Most folks feel that the fee you have to pay an agent for representing you is well worth the benefits you receive. These include information, advice and convenience. They do the looking for you!

After you feel you have a list of potential homes, it’s time to narrow the field. This may be the hardest part of the process because you’re mixing emotion and logic.



That’s why it pays to have professionals like Realtors, lenders, inspectors, and appraisers on your team. They can help you make a logical choice that you can also fall in love with.

With labor costs, materials and housings starts at recent lows, if you are considering building a new home, the timing is also excellent!

There are many advantages to building your own home, but probably the most important is customization. Having the home tailored to suit your every whim is one of the most rewarding feelings you can have when the job is completed. The ability to choose things like cabinetry, tiling, counter tops, and fixtures, not to mention the size of the bonus room, carries a lot of weight for most people when trying to determine whether to buy an existing home or building their own.

According to the National Association of Home Builders (NAHB), the first thing to do is to find a reputable builder with whom you have a good rapport. Places to obtain a list of local builders include your local homebuilder’s association or check www.move.com, the NAHB’s official new homes listing Web site.

You should also become familiar with your local newspaper’s real estate section. This will give you a good idea of the prices you can expect, the current hot neighborhoods, which builders are active in your area, etc. You might also turn to friends and relatives for recommendations, or your local real estate agent can help as well. □

LEGAL ADVICE

When You Relocate



BY DAVID M. COLLINS, JR.

**ATTORNEY IN UPSTATE SOUTH CAROLINA
COLLINS LAW FIRM, P.C.**

Relocating to a new area can involve a lot of changes. Some of these changes involve legal issues that require the advice and guidance of a lawyer.

While the following is not a comprehensive list of the legal issues that may arise when you relocate, it gives you a starting point to think about the issues that you may need to address as you settle in to your new home and community. The types of issues you may need to address when you relocate are:

Real Estate: Whether you are buying, selling or leasing, the input and advice of an experienced real estate attorney can be worth well more than the actual cost of the attorney's time and advice. When buying and selling a home in South Carolina, the transaction has to be handled by a licensed South Carolina attorney. The attorney is there to make sure the transaction goes through smoothly, to fix problems in advance, and provide you with the opportunity to purchase title insurance to protect you in the future if a problem arises that was not caught at the closing.

Estate Planning: When you relocate, you often add a new home or exchange one home for another. Sometimes you change states or even countries. Those changes may affect an existing estate plan or justify creating your first estate plan. New assets may need to be added to an existing trust, or an existing plan may need to be adjusted to account for this new asset. For some, this move may justify the creation of a first estate plan. It may be time to work with a lawyer to decide what estate plan may fit your current situation.

Elder Law: Elder law focuses on planning for the problems and pitfalls that come with growing older. Many relocations are connected with life changes associated with growing older — you may be moving to your retirement home or to be closer to an aging parent or relative. If age is a factor in your move, you may want to consult a lawyer who can assist in dealing with a current or potential disability and the financial issues that come with it.

Family Law: Sometimes a relocation is prompted by a divorce or separation. Other times, the relocation affects custody and visitation of children from a prior divorce or relationship. When you relocate to a new area and especially a new state, you may want to consult with a local family law attorney. Some of the questions you may want to ask include: (1) can I get divorced here, (2) now that I've moved, can I get help collecting child support or alimony, (3) what do I need to do to make sure my custody order is enforceable here.

Business Law: If you have a business or are planning on starting one when you settle in, it is a good idea to talk to a business law attorney who can help make sure that you are complying with all of the local rules and regulations that apply to your business. Business licenses, permits and tax issues vary from state to state and within each state —you may want to get advice to make sure that you and your business comply with all the local requirements.

Employment Law: Your relocation may be the result of a new job or career. Or, you may need to find new work in your new community. Not every new job or career change warrants seeking out the advice of an employment lawyer, but sometimes their advice can be invaluable in helping you work out the details of your new employment. If you separated from your prior employer on less than favorable terms, an employment lawyer may be able to help you determine if you have any claims against that former employer. []



COLLINS LAW FIRM, P.C.

David M. Collins, Attorney At Law



“

At the Collins Law Firm, we help families who are going through difficult situations. Our clients are going through a divorce, trying to adopt a child, dealing with an ailing parent, or coping with the loss of a loved one. Our goal is to help our clients get the best possible results for themselves and the families they love.

”



AREAS OF PRACTICE:

Family Law

Wills, Trusts, and Estates

Divorce

Estate Planning

Adoptions

Probate Administration

Mediation

Probate Litigation

Greenville Office: 135S. Main St., Ste. 300, Greenville, SC 29601

(864) 990-3061 Telephone (864) 990-3062 Facsimile

www.carolinafamilymatters.com

Educational Opportunities

AWAIT IN UPSTATE REGION

BY LYNNE BRANDON



Living in the Upstate region has its obvious perks. A temperate climate, scenic beauty and big city amenities without the hassles attract families and businesses to put down roots. Equally appealing are the region’s education choices offered in K-12 schools, private schools, colleges and universities. Upstate schools are teaching students to become citizens who are involved in community service while preparing future leaders with the knowledge needed to advance in a global economy.

The Greenville County School district is the largest public school system in South Carolina and the 47th largest public school system in the nation. Each day the district challenges and inspires more than 71,000 young people in grades K-12.

Schools are award winning and boast of 13 National Blue Ribbon Schools (Outstanding Academic Achievement), nine *Newsweek’s* Best High Schools and 21 Palmetto’s Finest Schools (State’s Top Schools). Scholarships totaled more than \$104.4 million for 2011-12. GCS students outscore their peers on the SAT (College Entrance Test) with an average score of 1455 versus 1422 statewide.

Schools of choice are attended by approximately 10,000 students. Choices include 11 magnet schools, International Baccalaureate schools, Virtual School, A.J. Whittenberg Elementary School of Engineering, Career Technology Centers, Fine Arts Center, Sterling School, and Monarch Elementary, where the curriculum infuses 21st century skills using project based learning experiences.

A global society brings technology into the GCS classroom: iPads, Laptops, Promethean Boards, and other mediums. “Students are reaping the benefits of attending a technology-rich campus,” said Melodie

White, Instructional Coach at Monarch Elementary. “Integrating a variety of technology with a project-based curriculum helps students understand how what they are learning applies to the world around them.”

Distance Learning allows elementary students to take virtual field trips to Antarctica, Australia, Ellis Island and other exciting locations.

Private schools in Greenville County offer alternative choices for parents. Christ Church Episcopal School, Haynsworth School and Bob Jones Academy have rich curriculums for students.

Christ Church Episcopal School (CCES) is a co-educational independent school in the Episcopal tradition, with approximately 1,125 students in grades 4K-12. The hallmark of a CCES experience is the education of the whole child: intellectual, physical and spiritual.

Small class sizes and a nurturing, community-oriented environment encourage high performance in the classroom, on the field, on the stage, and in service to others (the Project Host soup kitchen, elder care communities, and missions to Ecuador, South Africa, and other countries).

Graduating classes typically achieve standardized test scores well above the national average and 100 percent college acceptance for U.S. students. CCES is the only school outside of Germany to be certified by the Bavarian Ministry of Education.

Real world experiences start early and sixth-graders have their own iPads, giving them the world at their fingertips both in the classroom and at home. Students learn to be more efficient by using technology and demonstrate their knowledge using apps in new ways, from comic strips to iMovie presentations.

Reflecting on why CCES is special a parent wrote, “The words ‘welcome’ in so many languages as you walk in the doors; art reaching out from every corner; caring humans asking if they can help in any way; sculptures placed strategically to provoke inquisitive eyes and ears; endless sports choices that not only help build character but are revealing it. All of which each educator balances with the right dose of humor and joy.”

For more than 80 years, **Haynsworth Private School** has been a fixture in downtown Greenville. Started in 1921 by Madelyn Haynsworth, the school capitalizes on its small size. The independent K-2 preschool through 5th grade school provides the foundation for a successful secondary education for qualified children in a stimulating and nurturing environment.

Dedication to planned curriculum and small, intimate classes where the approach to learning enables each child to work at individual levels are the hallmarks of the school. Students are taught by qualified college-trained >>



MOVING 101

Tips and Tricks to Help You Move

BY BARBARA BRADY

Congratulations! You've decided to move to the Upstate area of SC! Now the fun begins... Since moving is listed as one of life's major stress factors, doing your homework and planning ahead can dramatically help take the edge off feelings of anxiety, overwhelm and the "deer in the headlights" paralysis that often arises. The following 10 steps are designed to help you keep your sanity before, during and after your move, and to ensure that your move and relocation will be smooth.

1. Create a timeline to get things done now!

Don't put things off, thereby creating unnecessary stress for yourself. What are all the steps that need to happen and by when? Jot down each thing you need to do with a due date, allowing ample time to set up each. For example, you may need months for your new insurance plan to take effect, but just a day to have your electricity working.

2. Weed out, weed out, and weed out! Get rid of anything you are not going to use in your new home. Sell it in a garage sale, or give it to a friend, or a charity like The Salvation Army. Moving companies charge you on the basis of weight and distance. That's why it's important to bring only what you really want and are going to use to your new home.

3. Hire a reputable realtor you LIKE. Your chosen realtor should be reliable, listen to what you want and care about your needs. They should be honest and make you feel like you're a top priority. Check websites of recommended realtors in your area. Call a few local realtors to learn what services they provide.

4. Get clear on what you want in a new home if you are buying. Realtors are not mind readers. Communicate honestly and openly with your realtor so that you establish a good working partnership with them. Do research on the town and where you want to live. Be clear on the type and size of new home and neighborhood you want to live in, and how this may be affected by difference in cost of living between your current and new location.

5. Hire a professional mover or move manager.

A good mover can be found through friends, family, acquaintances and your realtor. You can also check with the Better Business Bureau (BBB) or local Chamber of Commerce where you're moving. Every mover should offer a type of coverage called "full value replacement coverage".

6. Pack smart. Yes, you can do your own packing, but it's so much easier if someone else does it. Weed out first!!!! Then hire a professional packer. It's important to know that what they pack, they're liable for. If you pack, you're liable unless there's outward damage to the box.

7. Prepare your pets. Consult with your vet about pre and post move recommendations. If you're taking Fido the dog and Fifi the cat on the plane, you need to find out airline regulations beforehand. Have all their check-ups and shots up to date before leaving to make it easier on yourself in the new location.

8. Calm your kids. Moving can be especially traumatic for children, depending on their age and temperament. Make sure you communicate honestly and openly about what they can expect with your relocation and encourage them to express how they feel about the move including any concerns or fears they may have. Include them in the weeding out process (Step 2). Get them involved in making decisions they're capable of, like the color they want for their new room. Have them help you move the lighter boxes and Contact the Chamber of Commerce for kid-friendly activities and events.

9. Handle your stress. For people who are relocating, invariably what comes up for most are questions on how to manage stress. One common issue is people not being able to sleep because their mind is racing with their "to do" list. Another stress factor is feeling a lack of control. Deal with what's in your control and let go of the rest. Other than that, take care of yourself with plenty of rest, nutritious food, lots of water and regular exercise to keep your immune system strong.

10. Finally, keep your sense of humor and focus on how wonderful it will feel to be settled in your new home and exploring your new area! []



Bob Jones Academy

Grades K4-12



THE LARGEST CHRISTIAN SCHOOL IN SOUTH CAROLINA

- Dedicated to being faithful to the Word of God
- Focused on academic excellence
- Proven through academic and personal achievements

To apply visit BobJonesAcademy.net

1700 Wade Hampton Boulevard • Greenville, SC • (864) 770-1395

©2012 Bob Jones Academy. All Rights Reserved. (13841) 10/12

EDUCATION

individuals who believe that education is an ongoing process. “Haynsworth School offers a safe, caring and loving environment in which to learn,” said Donna P. Murrell, School Director. “We strive to make learning fun.”

From small beginnings come great things such as the **Bob Jones Academy (BJA)**. The school started in 1927 when Bob Jones, Sr., a well-known American evangelist opened his school in Florida with 47 students. Today, BJA serves students in grades K-12 and provides early education for children from birth to age 3. It is the largest Christian school in South Carolina.

“We challenge our students to succeed by providing high quality academics and encouraging personal excellence,” said Randy Page, Director of Public Relations. “Our goal is to help students develop a biblical outlook in all aspects of life and to provide them with an environment where they can grow and develop Christ-like character.”

In addition to academics, BJA also offers exceptional opportunities in the fine arts, public speaking and community service. BJA has a strong record for seniors pursuing higher education with ninety-five percent enrolling in colleges and universities.

At Bob Jones University and Clemson University, students build on the exceptional curriculum programs from K-12 years.

Originally named Clemson College, the university was started as an all-male military school. More than 100 years after its beginning, the university provides diverse learning, research facilities and educational opportunities for students throughout the country and the world. Today, **Clemson University** is one of the country’s top-tier research universities with the academic and social environment of a small college.

Unique programs such as “Creative Inquiry” give students the opportunity to study a subject of interest for course credit. Projects span several semesters and revolve around studying sea life,

EDUCATION

environment, medical technology and many other subjects.

Clemson is also well known for athletics, specifically its football program. “Tiger-mania” takes over the town when the Clemson Tigers, students and enthusiastic fans deck out in bright orange. Traditions like running down “The Hill,” by the school’s football players have earned the school fame as “the most exciting 25 seconds in college football.”

At nearby **Bob Jones University (BJU)** students receive a Biblically based education at the liberal arts university. BJU offers a unique blend of rigorous academic programs, discipleship, character and leadership development. BJU offers nearly 60 majors and more than 20 graduate programs across a broad array of interests. The university is composed of five different schools, as well as a seminary and graduate school of religion. Students participate in a variety of ministries on campus and in the community.

Medical school acceptance rates average greater than 80 percent versus the national average of 49 percent. Nursing and engineering majors have recently achieved a 100 percent pass rate on national exams. Students are also exposed to the fine arts – from a wide variety of recitals and concerts to professional-caliber Shakespeare, opera and modern productions to the world-class Bob Jones Museum and Art Gallery on campus.

“We seek to inculcate into our students a thirst for knowledge of the arts and sciences and we seek to satisfy that thirst,” said President Stephen Jones.

Spartanburg County’s residents have rich educational choices to fit every need. Spartanburg alone has seven colleges and universities: Converse College, Sherman College, Spartanburg Methodist College, Spartanburg Community College, the University of South Carolina Upstate, Edward Via College of Osteopathic Medicine – Carolinas Campus and Wofford College.

Children in K-12 attend >>



GREENVILLE COUNTY SCHOOLS

Where Enlightening Strikes!

301 E. Camperdown Way • Greenville, SC 29602

INFOLine 864-355-3100 • greenville.k12.sc.us

[facebook.com/gcschools](https://www.facebook.com/gcschools) twitter.com/gcschools

Your child will discover an exciting world of opportunities in Greenville County Schools! Highly-qualified teachers and challenging courses inspire students to achieve. State-of-the-art schools with vibrant classrooms and the latest technology stimulate imagination and create a passion for learning!

Come see for yourself how Greenville County Schools is igniting minds and creating the future!

Successful

The Class of 2012 earned more than \$104 million in college scholarships. GCS graduates attend the nation’s most prestigious universities.

Innovative

About 10,000 students (15%) attend school on choice, making GCS the state leader.

Professional

GCS boasts 646 National Board Certified Teachers; more than 24 states and ranking us 14th in the nation for total number of NBCTs.



EDUCATION



SHANNON FOREST CHRISTIAN SCHOOL

PK3-12th Grades
Accredited by SACS & ACSI Member

829 GARLINGTON RD. GREENVILLE, SC 29615 | shannonforest.com | 864.678.5107



"I can do all things through Christ who strengthens me." -PHILIPPIANS 4:13



public schools in seven districts in Spartanburg County. Spartanburg Charter School and South Carolina School for the Deaf and Blind are alternative choices to public school.

Accolades are many for the award-winning Spartanburg School District 7 proving that excellence is not a goal, it is a way of life for the district. Spartanburg High School's average SAT score remain above the state and national average and the highest in Spartanburg County. The AP program has the highest number of courses taught in South Carolina.

Spartanburg High's academic program is respected around the country as noted by its *Washington Post* designation as a top high school in the nation, and as the first public high school in the nation to be awarded the U.S. Department of Education Blue Ribbon School Award four times.

Spartanburg Day School (SDS) is a school of "firsts." It was the first independent college-preparatory school in South Carolina in 1957, with 35 students. Fifty-six years later, the K3-12 school boasts a 450-student enrollment and a history of 100 percent college placement for graduates.

SDS is the first school in Spartanburg County to implement the International Baccalaureate Programme, to introduce Chinese language and Singapore math, and to establish college partnerships with seven local colleges and universities.

Additionally, the school has in place a robust mentorship program for middle and upper school students, made possible by collaboration with over 20 businesses, professionals, and community leaders.

Specialized schools in the Upstate region add to the education choices for students. The **Sherman College of Chiropractic** offers a first professional degree program leading to the doctor of chiropractic degree. Sherman is one of just eighteen chiropractic colleges in the U.S. and the only one in the Carolinas.

The community benefits from the skills of senior students at the



*I am a Promise. I am a Possibility.
Promises Made. Possibilities Created.*

College Prep: K-12th Grade
Photo: Susannah Pazdan '15



CHRIST CHURCH EPISCOPAL SCHOOL
www.cces.org 864.331.4223

Christ Church Episcopal School does not discriminate on the basis of sex, race, color, creed, religion, national or ethnic origin, in the administration of its educational policies, admission policies, scholarship programs, financial aid or other programs, or other school-administered programs and activities.

EDUCATION

school's on-campus Health Center where students intern under the close supervision of licensed doctors to provide quality and affordable chiropractic care to the local community.

The **Edward Via College of Osteopathic Medicine— Carolinas Campus (VCOM)** is also training students for the medical profession. VCOM opened in the fall of 2011 at the former Spartan Mill site due to the proximity of Spartanburg Regional, which serves as VCOM's core hospital base.

"There is a critical need for physicians in the Carolinas – and to be more precise, there is an essential need for primary care physicians," said Natalie Brown, Assistant Marketing Director. "In order to meet those needs, VCOM provides its medical students with the education and clinical training needed to become a successful physician."

Among the fastest growing universities in South Carolina, the **University of South Carolina Upstate** is a diverse and dynamic community of 5,500 students from across the world. With 36 states and 51 countries represented among the student body, the university reflects the Upstate's international character. The 330-acre campus in Spartanburg serves as the primary headquarters for USC Upstate.

USC Upstate's Greenville campus is home to more than 500 commuting junior and senior level students. The Greenville campus is located at the University Center of Greenville, a nonprofit consortium of seven higher education institutions dedicated to increasing access to educational opportunities for area residents.

The school partners with **Greenville Technical College** to provide opportunities for students to complete technical or associate degrees at GTC, and transfer to complete a bachelor's level degree program in various disciplines.

Spartanburg Community College (SCC) is a public, two-year college with four locations and more than 100 programs of study that lead to high-demand careers. A variety of options are available from associate degrees designed for transfer to four-year colleges and universities, diplomas and certificates designed for direct job placement and corporate and community education programs.

SCC promotes business growth in the service area through its Center for Business and Entrepreneurial Development. Companies such as BMW, Michelin, Spartanburg Regional, ESAB, Mary Black,

Denny's Corporation and others regularly hire SCC graduates.

Children in Anderson County attend public schools in five districts. Anderson District 5 is a District of Choice allowing students to apply to any school in the district. Families can choose among schools with an emphasis on the arts, on STEM areas (Science, Technology, Engineering and Math), leadership, communications, and International Baccalaureate studies, among others.

Tri-County Technical College is a public two-year community and technical college with four campuses, known for its accessibility and affordable cost, while providing a top-quality educational option for the region.

The college has 70 major fields of study, including university transfer, nursing, computer information systems, mechatronics, criminal justice, and more. Tri-County has distinctive programs such as "The Bridge to Clemson" program, offered by invitation only to a select group of academically talented freshmen.

The city of Anderson is proud of its namesake, **Anderson University (AU)**. AU retained its Top Tier Ranking (21) among regional colleges in the South for the fifth consecutive year. For the sixth consecutive year, AU was named as one of America's "100 Best College Buys."

To meet the changing world needs the school has added new academic programs in the arts and has established The School of Criminal Justice, as well as a new School of Nursing which graduated its first class in 2012. []



Committed to a Tradition of Academic Excellence



Established in 1921

K2 Preschool - 5th Grade

Late Stay Program

Summer Explorer Camp

Haynsworth is an independent private school that provides an exemplary academic program in a stimulating and nurturing environment. The school offers an enriching experience in the classroom, fine arts, foreign language, technology and physical education.

For more information or a guided tour, please contact Admissions Office, The Haynsworth School

228 East Park Avenue Greenville, SC 29601 | 864-235-3010 | haynsworthschool@charter.net

www.haynsworthprivate.com



Healthcare Options

PLENTIFUL IN UPSTATE **BY SERENA STEVENS**

When moving to a new area, it is usually quite easy to pick out the various amenities and opportunities that are available. A crucial area to examine when scoping out potential relocation destinations, and one that many newcomers tend to overlook, is the presence of comprehensive, technologically advanced healthcare.

From smaller, individualized practices to larger health systems to alternative healthcare options, the Upstate leaves little to be desired in the way of caring for the entire family.

The following is a closer look at just a few of the healthcare providers in the area.

Located in Anderson, **AnMed Health** is the state's largest independent, not-for-profit health system. With more than 40 healthcare delivery sites, AnMed Health provides an impressive array of resources, including physician specialists, advanced diagnostic technologies and state-of-the-art treatments.

AnMed Health includes three licensed hospitals: AnMed Health Medical Center, AnMed Health Rehabilitation Hospital and AnMed Health Women's and Children's Hospital. In addition, AnMed Health operates a modern cancer center, a comprehensive home care division, a Level II trauma center, a cardiac and orthopedic center, three outpatient surgery centers, a family medicine residency program, two minor care centers, three retail pharmacies and a network of physician practices throughout the Upstate and northeast Georgia.

AnMed Health is a mentor hospital for heart attack care and is one of only a handful of South Carolina hospitals accredited as a Primary Stroke Center by the Joint Commission, a national health care accrediting organization.

AnMed Health Women's and Children's Hospital and AnMed Health Maternity Services each received a "5-Star Excellence Service Award" from Professional Research Consultants (PRC).

AnMed Health is also accredited as a Bariatric Surgery Center of Excellence by the American Society for Metabolic and Bariatric Surgery. Learn more online at www.AnMedHealth.org.

Located in Greenville, **Bon Secours St. Francis Health System** is a private, not-for-profit, integrated healthcare system. Known and respected as one of the top health systems in South Carolina, St. Francis provides regional leadership in cardiovascular care, orthopedics/rehabilitation, women's health, surgical services, oncology and neurology.



St. Francis healthcare campuses include St. Francis Downtown and St. Francis Eastside. Other facilities include St. Francis Outpatient Center, a freestanding Upstate Surgery Center, the Pearlie Harris Center for Breast Health, Upstate Surgery Center, St. Francis HomeCare and Open Arms Hospice.

St. Francis Millennium is also home to the St. Francis Institute for Chronic Health, the newest healing environment in the St. Francis healthcare family. Core services at the Institute for Chronic Health focus on identifying personal health risks, minimizing those risks and coordinating care for persons with chronic disease, such as diabetes, heart, vascular, lung and metabolic disorders.

Baptist Easley Hospital, a partnership between Palmetto Health and Greenville Hospital System University Medical Center, has been a part of the upstate South Carolina community since 1958. As the primary healthcare service provider in Pickens County, the 109-bed general acute care facility provides services such as surgery, lithotripsy, MRI, CT Scan, and emergency and outpatient care, as well as cardiopulmonary services.

The hospital excels in surgery, obstetrics, orthopaedics, emergency medicine, plus imaging and diagnostics (including state-of-the-art stereotactic biopsy technology). In addition, Baptist Easley's strong primary care physician network has offices conveniently located throughout the community.

Greenville Hospital System University Medical Center (GHS) is the largest not-for-profit healthcare provider in the state. It offers patients a sophisticated network of expertise and technologies through its five >>

SOUTH CAROLINA'S ONLY LEAPFROG "TOP HOSPITAL!"



Meet your NEW Doctor

LET US HELP YOU WITH ONE OF YOUR BIGGEST DECISIONS.

Your healthy, happy future can depend on selecting the right doctor. As you make your choice, keep these points in mind:

Close to home. You want to be able to get there easily.

A personal style that fits you. Find a doctor whose patient care approach makes you feel comfortable and confident.

Qualifications and specializations. Family practice. Internal medicine. OB-GYN. There are various professional approaches to caring. Ask good questions. And find the one that fits.

The practice. You pick your doctor, but you'll work with the whole practice. Get comfortable with the group you select.

Support system. Baptist Easley practices are supported by South Carolina's only Leapfrog Top

Hospital—the most competitive national hospital quality award.

We can help you make a choice you'll be happy with for years to come.

864.442.7621



**BAPTIST EASLEY
HOSPITAL**

caring is our calling.com

HEALTH & WELLNESS

medical campuses, tertiary medical center, research and education facilities, community hospitals, wellness center, physician practices (University Medical Group) and numerous specialty facilities in upstate South Carolina. The 1,268-bed system is home to 14 medical residency and fellowship programs, South Carolina's first patient simulation center and nearly 600 active clinical research trials.

University Medical Group, which includes approximately 550 physicians throughout the Upstate, provides health care to patients and serves as an entry point to GHS services. Outpatient practices offer access to primary and subspecialty care in family medicine, behavioral medicine and psychiatry, internal medicine, OB/GYN, pediatrics, orthopaedics, sports medicine, cancer treatment, surgery and neurosurgery. For a listing of UMG physician offices, please go to ghs.org.

GHS' Greenville Memorial Hospital has been ranked among the nation's top 50 hospitals in three specialties in *U.S. News & World Report's* publication of America's Best Hospitals. The specialties include heart and heart surgery, gastroenterology, and diabetes and endocrinology.

Mary Black Health System, LLC, is an integrated healthcare delivery system comprised of Mary Black Memorial Hospital, Mary Black Physicians Group, and Mary Black Health Network Inc.

Accredited by the Joint Commission, Mary Black Memorial Hospital is licensed for 209 beds and is a certified Stroke Center. Mary Black has provided patient-centered, cost-conscious healthcare services to upstate residents since 1925 and continues to build on a tradition of excellence.

Licensed for 209 beds, the Mary Black acute care hospital is accredited by The Joint Commission on Accreditation of Health Care Organizations. Mary Black Memorial Hospital features technological advanced surgical suites, a warm and inviting family birthing center, >>

STRESS RELIEF FROM MOVING

RELAXING
MASSAGE
THERAPY



SOOTHING
SKIN CARE

RIGHT HERE IN YOUR NEIGHBORHOOD

Massage Envy
SPA®

\$39

Introductory
1-hour customized
massage session*

\$49

Introductory 1-hour
Healthy Skin
facial session*

VERDAE VILLAGE
101 Verdae Blvd
At Laurens Rd w/ SteinMart
(864) 675-1155

PELHAM HILLS
3714 Pelham Road
At I-85 w/ Earthfare
(864) 288-1150

Franchises Available | MassageEnvy.com | Open 7 Days: M-F 8am-10pm, Sat 8am-8pm, Sun 1pm-8pm
*See clinic for details. ©2012 Massage Envy Franchising, LLC.

Greater
EASLEY
Chamber of Commerce



THE GREATER EASLEY CHAMBER OF COMMERCE and VISITORS CENTER is the one-stop place for relocation and tourism information in Easley and surrounding areas. Information is available on real estate, schools, restaurants, major employers, city recreation, fine arts, library, and places to go and things to do in Pickens County.

We are located at 2001 East Main St. in Easley S.C.

864-859-2693

WWW.EASLEYCHAMBER.ORG

email: ECC@EASLEYCHAMBER.ORG



Everybody's Talking...



When hip pain forced the former Cincinnati Bengals coach and Pickens High School football Coach Sam Wyche off the sidelines, the football legend was scheduled for surgery in a large teaching hospital with “leading” surgeons. But he felt lost in the system.

“Those surgeons never communicated with me and it was making me a little nervous. So I checked around, heard about Dr. Rosenberg and his anterior approach to hip surgery so I made the trip to Polk County. I’d never heard of St. Luke’s Hospital, but I had a first-rate experience. I can’t say enough good stuff about it.”

Now he’s telling everyone he knows. Whether he’s coaching the quarterback or signing autographs, Sam Wyche is back in the game of life.

Rosenberg Bone and Joint

828-894-3718

Joint replacement, including hip, knee and shoulder surgery. Specializing in anterior hip replacement, customized total knee replacement, arthroscopy, sports medicine and general fracture care.

St. Luke’s Hospital

828-894-3311

Physical and occupational therapy, certified hand therapy, sports rehab, lymphedema care, balance training, fall risk assessment and prevention.

Exceptional Care...

Close To Home.

 **St. Luke’s**
HOSPITAL

Columbus NC • I-26, Route 108 • 828 894 2408 • SaintLukesHospital.com

HEALTH & WELLNESS

a highly credentialed inpatient therapy center and a 24-bed Emergency Department. A new Intensive Care unit opened in 2011. Outpatient services include Radiology Services, an Endoscopy Center, Wound Center, Therapy Services and a Women's Breast Health Center featuring Digital Mammography.

The Mary Black Physicians Group is comprised of more than 35 highly skilled physicians in practices throughout Spartanburg County. Mary Black Health Network is the senior physician hospital organization (PHO) in the state and celebrated its 19th Anniversary in 2012.

Spartanburg Regional is an integrated healthcare delivery system that provides care from birth to hospice. A partner with the Upstate community for more than 90 years, the system has earned a reputation for technological excellence. Serving the counties of Spartanburg, Cherokee and Union in South Carolina, as well as Polk and Rutherford counties in North Carolina, the system employs approximately 5,600 and has more than 500 physicians on staff.

The flagship facility is Spartanburg Regional Medical Center, a 540-bed research and teaching hospital. The system also features Spartanburg Hospital for Restorative Care, a 97-bed, long-term, acute-care hospital with a 25-bed skilled nursing facility. Village Hospital, a 48-bed, acute-care facility, includes an emergency center, medical office building

and numerous practices and amenities. Spartanburg Regional Hospice includes in-home hospice services and a 15-bed Hospice Home.

Boasting the top rated Heart Center, Gibbs Cancer Center and Research Institute, Bearden-Josey Center for Breast Health, the Center for Women, the Village Hospital and its Emergency Department, Spartanburg Regional is also home to South Carolina's first certified stroke center and only accredited pain center.

Spartanburg Regional Medical Center achieved Magnet designation in 2005 and is the only South Carolina hospital to have achieved this prestigious award. In 2010, SRMC earned its Second Designation for nursing excellence from the American Nurses Credentialing Center, the nation's leading credentialing organization. Gibbs Cancer Center and Research Institute is also affiliated with MD Anderson Cancer Network®. For more information, visit spartanburgregional.com.

Like many nonprofit hospitals, **St. Luke's Hospital** has benefitted from the generous support of various community foundations and endowments. St. Luke's has experienced a renewed ability to meet the healthcare needs of the community. St. Luke's is also renowned for Rosenberg Bone and Joint Clinic, an orthopedic clinic under Dr. Brian Rosenberg. St. Luke's continues to expand its resources to deliver high-quality healthcare service through advanced technology in the hands of friendly, experienced people who care. []



FOR YOUTH DEVELOPMENT®
FOR HEALTHY LIVING
FOR SOCIAL RESPONSIBILITY

BETTER TOGETHER

At the Y, we work to inspire people to be their best. We believe that together we become stronger, smarter, healthier.

Our programs, our classes, our people are here to support your goals and aspirations. Because it is together that we become our best.



ymcagreenville.org
YMCA OF GREENVILLE

Metro
864-242-1111

Adams Mill Program Center
864-963-3608

Caine Halter Family YMCA
864-679-9622

Camp Greenville
864-843-3291

Eastside Family YMCA
864-292-2790

George I. Theisen Family YMCA
864-834-2400

GHS Family YMCA
864-963-3605

Hollingsworth Outdoor Center
864-963-3608

Judson Community Center
864-271-8800

Teen Services
864-963-3608

Verdae YMCA
864-233-4486



Love comes to the rescue of children every day.



At Shriners Hospitals for Children — Greenville, our mission is simple: deliver world-class orthopaedic care to children who need it most — whether their families can afford it or not.

For 85 years Shriners Hospitals for Children — Greenville's expert physicians, surgeons, therapists and other medical staff have been helping children with orthopaedic conditions live their lives to the fullest. We have a special expertise in the following areas: pediatric sports injuries; fracture care; cerebral palsy; scoliosis and other spinal abnormalities; clubfoot and other problems of the foot; limb deficiencies and prosthetic restoration; spina bifida; and brittle bone disease.

And while expertise, dedication and generosity make it all possible, ultimately we believe our hospital is fueled by love. Helping children. Protecting Childhood. At Shriners Hospitals for Children, we call it Love to the rescue.



Shriners Hospitals for Children®
Greenville

Love to the rescue.™

1-864-271-3444 | shrinershospitalsforchildren.org

Or contact us directly at Shriners Hospitals for Children — Greenville
950 West Faris Road, Greenville, SC 29605
Referrals: 1-866-459-0013



The Fountain of YOUTHFUL SMILES

BY MARGARET A. ROTH, DMD
ROCKY CREEK DENTAL CARE



Signs of aging don't stop with just the lines around our eyes and brown spots on our skin. They can be seen in our smile, too. Yellowing teeth, receding gums, and wrinkles around our mouths are all evidence of years passing. We loved our grandparents, but most of us aren't in any rush to look like them!

Caring for your teeth is the key to a young, healthy smile. Removing dental plaque reduces the amount of harmful bacteria that cause cavities and gum disease. If not removed, the bacteria in plaque produce toxins and enzymes that irritate the gums and lead to inflammation. Initially, the irritated gums are red, tender, and more likely to bleed, a condition known as gingivitis. If it is allowed to persist, it can progress to periodontitis, where the attachment of the gums and bone to the teeth are damaged. Teeth with periodontitis usually look long with gaps and tend to shift creating spaces or overlapping teeth. Eventually, if left untreated, it leads to tooth loss. The loss of teeth ages a person immensely. Back teeth help support our cheeks and lips; therefore, tooth loss can increase facial wrinkles. Also, people who have missing teeth find that eating nutritious foods can be difficult, which directly affects overall health.

There are several things we can easily do at home to retain our teeth and healthy smile. Thoroughly brushing and flossing daily is crucial in removing the harmful bacteria. Antimicrobial mouthwashes and mints and gums sweetened with xylitol (a natural antimicrobial for cavity causing bacteria) are also effective. Fluoride rinses work by making the enamel more resistant to the bacteria. This balance between our teeth and the bacteria is affected by the foods and beverages we consume. Limiting the frequency of snacks and flavored beverages helps decrease the exposure to acids in our mouths. Bacteria use the acids and sugars from our foods to break down our teeth making cavities. Eating a balanced diet is another way to decrease the likelihood of cavities, as well as making our bodies better able to heal and boosting our immunity. Our nutrition and oral hygiene are both important to our smiles.

To keep our mouths healthy and to minimize oral health problems, you should see a dentist regularly. Professional cleanings are the only way to remove the hard deposits of tartar, which trap plaque bacteria along the gum lines. Also, having check-ups regularly can help identify problems early, when they are easier and cheaper to resolve. If appropriate, your dentist or physician can discuss a smoking cessation program with you. Smoking increases the aging process throughout the body, as well as staining teeth and contributing to cavities, periodontal disease, and tooth loss.

A dental professional may also discuss cosmetic procedures for that youthful smile. While crowns and veneers are sometimes the best option, many times simply whitening the teeth with custom made trays and professional gel can take years off of you and your teeth! Also, by moving teeth into a more ideal position through braces or Invisalign (clear tray aligners) your teeth will not only look better, but you'll be able to better clean and care for them. This creates a smile that is more beautiful and more healthy! Caring for your teeth and smile can be worth a lot more than "just another wrinkle cream" helping you to find that fountain of youth! []

We've been an important part of the Hawkins family history for over 6 years.



Zeno (Owner of Highland Homes), Meg (Homemaker),
with their children.

To become a part of our dental family, simply
call to schedule your first appointment!



John R. Piccione, DDS
Margaret A. Roth, DMD
Kathryn R. Freedman, DMD

Open 5 days a week in two locations:
Eastside: 978 Batesville Rd. 864-675-9399
Downtown: 1322 E. Washington St. 864-235-1200



ROCKY CREEK 
DENTAL CARE

www.rockycreekdental.com 

Upstate Offers RELIGIOUS DIVERSITY

BY GEORGIE RHEIN

Greenville as a community supports an open door policy to religious groups with more than 250 churches in the surrounding area. More than 60 percent of the city’s families have a close identity with a local church.

While the dominant faith is Christian-based with 122 Baptist churches in the area, there are choices for every faith from Quaker to Orthodox Judaism. The church serves as a spiritual and social center for many Southern families who prefer the comfort and camaraderie found within their religious values.

Since the Upstate region is in the Southern Bible Belt, it is home to historical churches such as Christ Church Episcopal which laid its first cornerstone in 1825 as the church broke away from the English Anglican influence. The church and its courtyard are listed on the National Register of Historic Places. It is the oldest organized religious body and the oldest church building remaining in Greenville. Over the years, the church has expanded but the spiral and turret still greet families and children who attend church services. The private secular school funded by the church is highly regarded for its academic achievements.

In 2014, the Buncombe Street United Methodist Church will celebrate the 180th anniversary of its founding. During those 180 years the Buncombe Street congregation has provided from its membership the nucleus of several suburban congregations, leadership for United Ministries, the Rescue Mission, the Free Medical Clinic and the Mercy Center at Triune Methodist Church. The church co-produces programs with Spartanburg Methodist College for teens and young adults.

Some families relocating to the Upstate may prefer to attend a non-denominational church such as South-

side Fellowship. Its primary mission is reaching out to the community with new concepts like Discovery classes.

“Experiencing Southside Fellowship helps families build relationships that will launch them into community life with others in our fellowship,” said one of the pastors. Southside Fellowship is committed to that same core of truths that have been handed down and lived out by Christians since the times of the apostles.

Another church committed to the community is also Greenville’s largest, Redemption World Outreach Cen-

ter. With six ministries, the Center focuses on the inner city, sidewalk Sunday school and helping the homeless. Redemption reaches out in love to bring the word of God to people of all ages and socio-economic backgrounds. The Center aims to break poverty mindsets and remove religious barriers.

For Upstate families who enjoy worshipping in nature, the Symmes Outdoor Chapel is now one of several buildings managed by the YMCA Camp Greenville. Known as “the Pretty Place” because of its fantastic views, the chapel is also booked for weddings, church retreats and is the

spiritual center for summer campers.

Of course, many churches extend their values to include Christian education. More than 67 private and secular schools are registered in Greenville County to provide instruction in religious values. Many of them include summer camps as well. One of the largest is Bob Jones Academy offering Pre-K through 12th grade education that is dedicated to Christian principles and focused on academic excellence. Everything at the academy, from academics to sports to community ministries, is designed to help students learn from a foundation of spiritual beliefs.

Finding the right place to worship in the Upstate will be the easiest part of your family’s relocation. []



OVERWHELMED WITH UNPACKING?



Come and experience the genuine worship, warm fellowship, and straight-forward biblical teaching that *Southside Fellowship* has to offer. Kids enjoy an engaging, interactive, and nurturing environment designed just for them while middle and high school students connect through meaningful relationships that inspire them to worship God and serve others. There are many great churches in the Greenville area, but we think you'll find we're distinctively different. We hope to have you as our guest.



Southside Fellowship • 3161 S. Highway 14 • Greenville, SC 29615 • 864.234.7033
Casual contemporary worship services Sundays at 8:30, 10:00, & 11:30 a.m.

www.southsidefellowship.org

BLUE PAGES : NEWCOMER/VISITOR SOURCE

POLICE - NON-EMERGENCY EMERGENCY -911

Anderson
864-231-2280

Clemson
864-624-2000

Easley Police
864-859-4025

Greenville
864-467-5333

Greer
864-848-2151

Fountain Inn
864-862-4461

Mauldin
864-289-8900

Pickens
864-878-6366

Simpsonville
864-967-9536

Spartanburg
864-596-2222

Travelers Rest
864-834-9029

UTILITIES

Blue Ridge Electric Cooperative, Inc.
800-240-3400

Broad River Electric Co-op
866-687-2667

Duke Energy Progress
800-777-9898

Fort Hill Natural Gas Authority
864-859-6375

Fountain Inn Natural Gas
864-862-0042

Greenville Water
864-241-6000

Greer Commissioner of Public Works
864-848-5500

Laurens Electric Corp.
800-942-3141

Little River Electric Cooperative
864-366-2141

Piedmont Natural Gas Company
800-752-7504

RECYCLING/WATER/SEWER

Anderson Recycling
864-260-1001

City of Spartanburg Public Works
864-596-3690

Clemson Public Works
864-653-2053

Easley Recycling
864-836-2509

Greenville Public Works
864-467-4345

Greer City Public Service Dept.
864-848-2184

Fountain Inn Public Works
864-862-4812

Mauldin City Recycling
864-289-8904

Simpsonville Public Works
864-967-9531

Spartanburg Water
864-582-6375

Spartanburg County Public Works
864-595-5326

Travelers Rest Public Works
864-834-9029

POST OFFICE

www.USPS.com
1-800-ASK-USPS
(800-275-8777)

ATHLETIC TICKET OFFICES

Carolina Panthers
704-358-7800

Greenville Drive
(Class A Minor League Baseball)
864-240-4500

Greenville Road Warriors Hockey
864-674-PUCK

Greenville-Pickens Motor Speedway
864-269-8057

CHAMBERS OF COMMERCE

Anderson | 864-226-3454

Clemson | 864-654-1200

Easley | 864-859-2693

Fountain Inn | 864-862-2586

Greater Greenville | 864-242-1050

Greater Greer | 864-877-3131

Mauldin | 864-297-1323

Pickens | 864-878-3258

Seneca | 864-882-2097

Simpsonville | 864-963-3781

Spartanburg | 864-594-5000

CONVENTION & VISITORS BUREAUS

Anderson Convention &
Visitors Bureau
877-282-4650

Clemson Visitors Center
864-654-1200

Easley Visitors Center
864-859-2693

Gaffney Visitors Center
864-487-6244

Greenville Convention &
Visitors Bureau
800-351-7180

Spartanburg Convention &
Visitors Bureau
800-374-8326

TRANSPORTATION

Greenville Spartanburg (GSP)
International Airport
864-877-7426

PARKS & RECREATION

Anderson County
864-231-2232

Clemson
864-624-1120

Easley Parks & Recreation
864-855-7932

Greenville Parks & Recreation
864-467-4355

Greenville County Recreation District
864-288-6470

Greer Parks & Recreation
864-848-2190

Mauldin Parks & Recreation
864-335-4875

Simpsonville Parks & Recreation
864-967-9533

Spartanburg City Parks & Recreation
864-596-3105

Spartanburg County Parks & Recreation
864-225-0591

PUBLIC SCHOOL SYSTEMS

Anderson County Board of Education
864-260-5000

Greenville County Public Schools
864-355-3100

Laurens County Public Schools
District 55 | 864-984-3568
District 56 | 864-833-0800

Oconee County Public Schools
864-886-4400

School District of Pickens County
864-397-1000

Spartanburg County Public Schools
District 7 | 864-594-4400

Union County Public Schools
864-429-1740

BLUE PAGES : NEWCOMER/VISITOR SOURCE

COLLEGES & UNIVERSITIES

Anderson University
864-231-2000

Bob Jones University
864-242-5100

Clemson University
864-656-3311

Converse College
864-596-9000

Furman University
864-294-2000

Greenville Technical College
864-250-8000

North Greenville University
864-977-7000

Southern Wesleyan University
864-644-5000

Spartanburg Methodist College
864-587-4000

Spartanburg Community College
864-592-4800

Tri-County Technical College
864-646-8361

University Center of Greenville
864-250-1111

University of South Carolina - Upstate
864-503-5000

Wofford College

864-597-4000

HOSPITALS

AnMed Health
800 N Fant St., Anderson
864-512-1000

Baptist Easley Hospital
200 Fleetwood Dr., Easley
864-442-7200

Bon Secours St Francis Health System
1 St Francis Dr., Greenville
864-255-1000

Cannon Memorial Hospital
123 WG Acker Dr., Pickens
864-878-4791

Greenville Memorial Hospital
701 Grove Rd., Greenville
864-455-7000

Greer Memorial Hospital
830 South Buncombe Rd., Greer
864-797-8000

Hillcrest Memorial Hospital
729 SE Main St., Simpsonville
864-967-6100

Mary Black Health System
1700 Skylyn Dr., Spartanburg
864-573-3000

North Greenville Hospital
807 N Main St., Travelers Rest
864-834-5132

St Francis Eastside
125 Commonwealth Ave., Greenville
864-675-4000

Shriners Hospital for Children
950 W Faris Rd., Greenville
864-271-3444

Spartanburg Regional Medical Center
101 East Wood St., Spartanburg
864-560-6000

VOTER REGISTRATION

SC Election Commission
803-734-9060
www.scvotes.org/

ENTERTAINMENT

BI-LO Center
864-241-3800

Heritage Park Amphitheatre
864-963-3502

The Peace Center
for the Performing Arts
864-467-3000

Littlejohn Coliseum
800-745-3000

Spartanburg Auditorium
800-745-3000

ADVERTISERS INDEX

ATTORNEYS & LEGAL

Collins Law Firm, P.C. | pg 29
www.carolinafamilymatters.com

BUILDERS

Adams Homes | Inside Front Cover
www.adamshomes.com

Bradley Construction | pg 6
www.bradleyconstructions.com

Meritus Signature Homes | pg 3
www.meritushomes.com

CITIES & TOWNS

City of Gaffney | pg 9
www.getintogaffney.com

Easley Chamber of Commerce | pg 38
www.easleychamber.org

Mauldin Chamber of Commerce | pg 14
www.mauldinchamber.org

Simpsonville Chamber of Commerce | pg 23
www.simpsonvillechamber.com

COMMUNITIES

Cherokee Valley | pg 2
www.cherokeevalleysc.com

DENTAL SERVICES

Rocky Creek Dental Care | pg 43
www.rockycreekdental.com

EDUCATION

Anderson University | pg 21
www.andersonuniversity.edu

Bob Jones Academy | pg 32
www.bobjonesacademy.net

Christ Church Episcopal School | pg 34
www.cces.org

Greenville County Schools | pg 33
www.greenville.k12.sc.us

Shannon Forest Christian School | pg 34
www.shannonforest.com

Spartanburg Day School | pg 17
www.spartanburgdayschool.org

The Haynsworth School | pg 35
www.haynsworthprivate.com

HEALTH & WELLNESS

Balanced Solutions | Back Cover
www.balancedagain.com

Baptist Easley Hospital | pg 37
www.caringisourcalling.com

Massage Envy Spa | pg 38
www.massageny.com

Shriners Hospitals for Children | pg 41
www.shrinershospitalsforchildren.org

Spartanburg Regional Healthcare System
| Inside Back Cover
www.spartanburgregional.com

St. Luke's Hospital | pg 39
www.saintlukeshospital.com

YMCA of Greenville | pg 40
www.ymcagreenville.org

HOME IMPROVEMENT & DECOR

All About Flooring | pg 5
www.allaboutflooringofsc.com

Genco Pools & Spas | pg 23
www.gencopools.com

Protec Security/Laurens Electric | pg 48
www.protecservice.com

INSURANCE

Steve Borklund Insurance Agency | pg 11
www.steveborklund.com

MATURE LIVING

Rolling Green Village | pg 15
www.rollinggreenvillage.com

PET CARE & ADOPTION SERVICES

Milestone Veterinary Associates | pg 15
www.milestonevet.com

Spartanburg Humane Society | pg 17
www.spartanburghumane.org/adoptme

REAL ESTATE

Keller Williams Realty-
Samantha Lee & The Carolina Success Team
www.CarolinaSuccessTeam.com
Direct: 864-396-2668

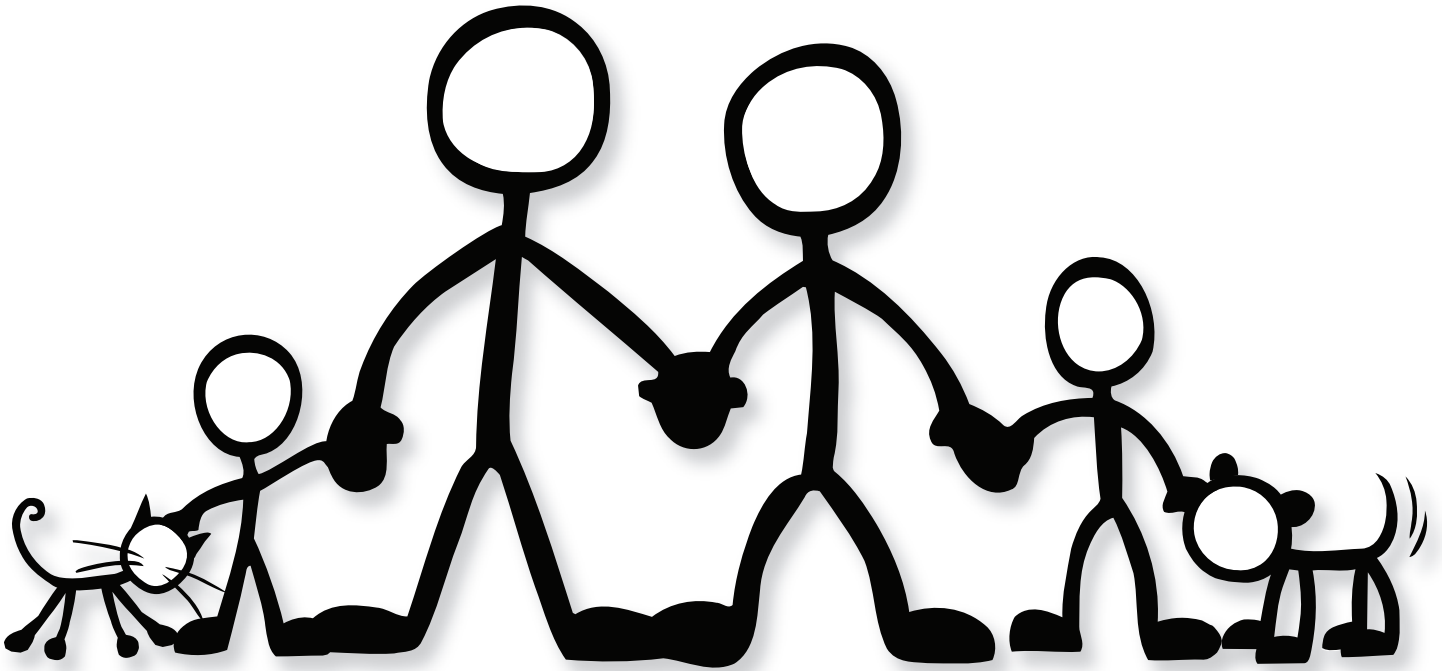
McAlister Realty/SK Builders | pg 7
www.builderpeople.com

SHOPPING

Tate Jewelers | pg 11

WORSHIP

Southside Fellowship | pg 45
www.southsidefellowship.org



 **ProTec**TM
**security for your
peace of mind.**

ProTec Security offers a complete selection of motion, smoke and fire detection, infrared intrusion detectors, perimeter sensors and other devices...

locally monitored every minute of every day. Two of every three burglaries in the US are residential, but homes with properly installed and monitored security systems are **300% less likely to be burglarized**. So call or drop by Laurens Electric today and find out how to give your family peace of mind.

Call today for a FREE in-home security analysis and receive a FREE  \$20 gift card.

PROTEC SECURITY IS A DIVISION OF

 **Laurens Electric
Cooperative, Inc.**
A Touchstone Energy® Cooperative

1-800-942-3141

www.protecservice.com



BL-April2013

EXPERIENCE FIRST

- First in the South to perform robotic, endoscopic, beating-heart surgery
- One of the first sites in the nation chosen for the NCI Community Cancer Centers Program
- South Carolina's only two-time recipient of the prestigious Magnet® designation for nursing excellence
- South Carolina's first nationally accredited Chest Pain Center
- First in the state to use TomoTherapy® radiation therapy
- Fully accredited Level III Neonatal Intensive Care Unit
- Most comprehensive and experienced da Vinci® robotic surgical program in the state
- Named a Bariatric Surgery Center of Excellence, with more than 1,800 surgeries performed
- Affiliated with the MD Anderson Cancer Network™
- First certified Primary Stroke Center in South Carolina
- 18 certified Patient Centered Medical Homes® within Medical Group of the Carolinas (MGC)

101 East Wood Street, Spartanburg, SC 29303
864-560-6000 • spartanburgregional.com



Spartanburg Regional
Healthcare System



Don't accept fatigue, weight gain, depression or low sex drive as normal.

*Feel great again with Hormone Replacement Therapy.
The perfect treatment for both men and women!*

Hormonal balance is key to your well-being and a delicate thing to achieve. Other hormone replacement therapies rarely accomplish or maintain the hormonal equilibrium your body depends on for optimum health. Our Hormone Replacement Therapy is highly successful. Here's why:

The right kind of hormone

We use only bioidentical hormones that are natural, plant-derived compounds which have the same molecular structure as those made by the human body.

The right amount and compound of hormones

At **Balanced Solutions**, each bioidentical hormone regimen is custom-compounded, based on individual diagnostic results and history, making them safer and more effective than synthetic hormones.

The right delivery system

Pellet therapy is a sustainable delivery method that balances body chemistry and restores health and vitality. The effect of pellets is nearly identical to the way hormones are naturally produced in a healthy, 30-something individual.

Additional Health Benefits include:

- Rejuvenation
- Increased Metabolism
- Enhanced Mental Clarity
- Improved Sleep Quality
- Reduction in Mood Swings
- Decreased Hot Flashes
- Increased Libido
- Improved Blood Flow
- Promotes Bone Density

LIMITED TIME OFFER

Complimentary,
No Obligation Blood Analysis!
(\$250 Value)

Call to schedule your appointment today.
888.299.9300 or go online at balancedagain.com

Balanced Solutions 864.662.7655 toll free 888.299.9300 balancedagain.com
The Village at Thornblade • 420 The Parkway, Suite N • Greer, SC 29650